

RASS-R - TRACKAN

TRACKAN V1.3.8 Viewer

Current File(s) D:\DEMO CAMPAIGN RASS-R\DATA\DATASET 080125\RMUDE OPS\080125_RADAR1ON_D6\080125_1700 <-> 080125_1700

Thread: RADAR1 Filter: None Display: All

Nr.	S Address	A Code	Ra STD	Az STD	Detect	Used	Miss	Pd	V&C A	V&I A	V&C C	V&I C	RNG In	AZM In	ALT In	UTC In	RNG Out	AZM Out
✓ 369	300110	2562	8.001	0.060	50	42	0	100.00	100.00	0.00	100.00	0.00	103.42	81.156	13725	17:00:02.359	145.81	102.409
✓ 370	3C5EE2	2557	11.416	0.053	33	27	0	100.00	100.00	0.00	100.00	0.00	107.21	91.362	7875	17:52:44.953	142.34	95.350
✓ 371	3950D0	2556	8.174	0.032	163	150	1	99.34	100.00	0.00	100.00	0.00	82.49	72.894	3200	17:03:58.953	109.39	211.690
✓ 372	3C4E50	2552	7.452	0.037	168	157	0	100.00	100.00	0.00	100.00	0.00	82.34	71.351	3825	17:24:07.125	145.48	331.155
✓ 373	3C4D47	2551	7.083	0.034	156	149	1	99.33	100.00	0.00	100.00	0.00	98.68	93.625	7425	17:00:02.820	108.82	211.740
✓ 374	39452E	2547	11.838	0.034	142	138	0	100.00	100.00	0.00	100.00	0.00	80.45	73.438	5300	17:00:02.156	143.46	144.525
✓ 375	400936	2546	12.101	0.040	87	84	0	100.00	100.00	0.00	100.00	0.00	80.25	73.367	3650	17:43:04.109	28.18	327.448
✓ 376	400FDF	2543	10.073	0.031	167	159	0	100.00	100.00	0.00	100.00	0.00	120.52	66.099	9300	17:00:01.921	142.36	334.171
✓ 377	3C48A6	2542	7.850	0.023	45	40	0	100.00	100.00	0.00	100.00	0.00	81.12	71.554	4000	17:51:09.601	52.58	43.330
✓ 378	3C56EF	2541	12.742	0.070	71	65	0	100.00	100.00	0.00	100.00	0.00	80.08	73.581	4300	17:35:45.898	142.14	92.285

Reported: 62124

- Coasted: 895 / 1.4
- Selected: 160 / 0.3
- Not Init.: 167 / 0.3
- Linked: 61062 / 98.3
- Out: 6905 / 111.1
- Missed: 195
- Out Cov.: 3054

Not Reported: 3249

Used: 54157 [#] Valid & Corr. A: 99.675 [%]
 Pd: 99.641 [%] Valid & InCorr. A: 0.000 [%]
 Az STD: 0.042 [deg] Valid & Corr. C: 99.357 [%]
 Ra STD: 14.930 [m] Valid & Incorr. C: 0.294 [%]

Time of Recording: 17:00:04.671000 [h:m:s]

```

(010)Data Source Identifier
SAC = 08006 SIC = 003
(140)Time of Day (UTC)
Time = 17:00:04.1562
(020)Target Report Descriptor
Mode 3 Roll Call ID
Type: S|I|N|RP|SP|RB|FX
7 | 8 | 1 | 0 | 0 | 8
(040)Measured Position in Slant Polar Coordinates
Rd = 12.51 (Nm) THEP = 158.62 (deg)
(070)Mode 3/A Code in Octal Representation
U = 010 = 01L = 01 Mode 3/A = 3543
(090)Mode 3 Code in Binary Representation
U = 010 = 0 Mode 3 = 38826 (ft)
(130)Radar Plot Characteristics
SR: SSR|SR|PAL|PRM|RPD|PD|FX
0 | 1 | 1 | 0 | 0 | 0 | 0 | 0
Number of received replies for (M)SSR
SSR = 4
Amplitude of (M)SSR reply
SR = -50 (dBw)
(220)Radar address
400FDF
(240)Radar Identification
E7V2632
(250)Mode 3 TB data
TB data EC 89 EF 31 20 64 06
TB data EC
TB data FF DD 89 30 20 04 09
TB data EC
TB data CR 38 00 31 E4 00 00
TB data EC
(161)Track Number
Nr# = 1893
(042)Calculated Position in Cartesian Coordinates
X = 85.77 (Nm) Y = -8.96 (Nm)
(200)Calculated Track Velocity
Ground Speed = 882.88 (kt)
    
```

User Manual

Edition :	7
Edition Date :	28-OCT-16
Status :	Released Issue

DOCUMENT IDENTIFICATION SHEET

DOCUMENT DESCRIPTION

Document Title
RASS-R TRACKAN Module

Document Reference Number

EDITION : 7

EDITION DATE : 28-OCT-16

Abstract

The RASS-R TRACKAN Module User manual describes the TRACKAN module and the software components of which it is built. TRACKAN interfaces with the RASS-R Data Handler Module (DHM) and therefore you should be familiar with that material.

This manual supplements the RASS-R Toolbox manual, and assumes that you are familiar with that material. You should also be familiar with the operation of your computer, your computer's operating system and the Intersoft-Electronics specific hardware for Radar Data I/O.

Keywords

TRACKAN Pd
BDS Register Analysis

MODE-S

CONTACT PERSON : Glenn Bosmans

TEL : +32 14 231811

DOCUMENT STATUS AND TYPE

STATUS		CATEGORY	
Working Draft	<input type="checkbox"/>	Executive Task	<input type="checkbox"/>
Draft	<input type="checkbox"/>	Specialist Task	<input checked="" type="checkbox"/>
Proposed Issue	<input type="checkbox"/>	Lower Layer Task	<input type="checkbox"/>
Released Issue	<input checked="" type="checkbox"/>		

ELECTRONIC BACKUP

INTERNAL REFERENCE NAME :

IE-UM-00032-007 TRACKAN.doc

DOCUMENT APPROVAL

The following table identifies all authorities who have successively approved the present issue of this document.

AUTHORITY	NAME AND SIGNATURE	DATE
Author	Dirk de Bal	10/02/05
Editor	Bert Sauviller Jeroen Janssens	31/05/13 09/07/12
Director ATC	Ing. M. Vanuytven	
Director Software Department	Ir. E. Moons	

DOCUMENT CHANGE RECORD

The following table records the complete history of the successive editions of the present document.

EDITION	DATE	REASON FOR CHANGE	SECTIONS PAGES AFFECTED
0.1	10/02/05	New document	All
0.2	24/11/05	Update with new features	All
1.1	29/06/07	Layout changed from figure 3	All
1.2	26/06/08	Review of chapter 4 and 6 Chapter 7 Tutorial removed	
3	13/10/09	Filename changed; Manual up to date with TRACKAN v1.3.6	None
4	06-JAN-11	Manual up to date with TRACKAN v1.3.7	None
5	09-JUL-12	Editorial changes	P13, P15
6	31-MAY-13	User manual up to date with TRACKAN version 1.3.8; Logo updated	None
7	28-OCT-16	Review release 3.8.0	None

TABLE OF CONTENTS

1. INTRODUCTION.....	8
1.1. BENEFITS AND POSSIBILITIES OF THE SYSTEM	8
2. GENERAL OVERVIEW	9
2.1. TRACKAN AS PART OF RASS-R	9
2.2. TRACKAN PROCESSING UNIT	9
2.3. TRACKAN CONFIGURATION	9
2.4. TRACKAN VIEWERS.....	10
2.5. NETWORK OPERATION.....	10
3. INSTALLATION, VERIFICATION AND STARTUP	11
3.1. RUNNING THE DHM BACKGROUND SERVER.....	11
3.2. RUNNING THE TRACKAN PROCESSING UNIT.....	11
4. CONFIGURATION.....	12
4.1. ADD/EDIT PROCESSING THREADS	13
4.1.1. <i>General tab</i>	13
4.1.2. <i>Process tab</i>	16
4.1.3. <i>Advanced Tab</i>	20
4.1.4. <i>Alarm tab</i>	22
4.1.5. <i>Radar's Digest tab</i>	23
4.1.6. <i>Distribution tab</i>	23
4.2. SAVE/LOAD CONFIGURATIONS	23
5. RUNNING	24
5.1. RECALCULATION.....	25
5.2. ON-LINE HELP	26
5.3. QUITTING TRACKAN	26
6. SOFTWARE COMPONENTS	27
6.1. TRACKAN MAIN GUI.....	27
6.2. CONFIGURATION WINDOW.....	27
6.3. RECALCULATION WINDOW	28
6.4. VIEWERS	28
6.4.1. <i>TRACKAN Main Viewer</i>	29
6.4.2. <i>TRACKAN History Viewer</i>	32
6.4.3. <i>TRACKAN Histogram Viewer</i>	33
6.4.4. <i>TRACKAN BDS Register Viewer</i>	33

TABLE OF FIGURES

Figure 1-1: TRACKAN data flow	8
Figure 2-1: RASS-R Structure	9
Figure 3-1: TRACKAN main GUI in compact mode	11
Figure 3-2: TRACKAN main GUI in full mode	11
Figure 4-1: TRACKAN configuration window	12
Figure 4-2: Menu bar	13
Figure 4-3: Preferences - General tab	15
Figure 4-4: Preferences - Process tab	16
Figure 4-5: Enabled (Bertem) and Disabled (St-Hubert) thread	16
Figure 4-6: Different modes	16
Figure 4-7: Radar data format	17
Figure 4-8: Track Extrapolate=3	17
Figure 4-9: Track Extrapolate=5	18
Figure 4-10: Late Track initiation	18
Figure 4-11: Viewer display options	19
Figure 4-12: Preferences - Advanced tab	20
Figure 4-13: Viewer display options	21
Figure 4-14: Alarm configuration window	22
Figure 5-1: Work in progress information	24
Figure 5-2: Work done information	24
Figure 5-3: Recalculation window	25
Figure 6-1: TRACKAN Main GUI in action	27
Figure 6-2: TRACKAN Configuration window	27
Figure 6-3: TRACKAN Recalculation window	28
Figure 6-4: Viewer selection drop down menu	28
Figure 6-5: TRACKAN History window	29
Figure 6-6: Legend and statistics	30
Figure 6-7: Detailed PPI view with label and corresponding ASTERIX data	31
Figure 6-8: TRACKAN History window	32
Figure 6-9: TRACKAN Histogram window	33
Figure 6-10: TRACKAN BDS register window	33
Figure 6-11: TRACKAN detailed BDS register window	34
Figure 6-12: TRACKAN BDS Register Timeline representation	35
Figure 6-13: ELS/EHS detail	35

TABLE OF TABLES

Table 1: TRACKAN TPC/IP Ports	10
-------------------------------------	----

CONVENTIONS USED IN THIS MANUAL

The following conventions are used in this manual:



Note: This icon to the left of bold italicized text denotes a note, which alerts you to important information.



Caution: This icon to the left of bold italicized text denotes a caution, which alerts you to the possibility of data loss or a system crash.



Warning: This icon to the left of bold italicized text denotes a warning, which alerts you to the possibility of damage to you or your equipment.

1. Introduction

TRACKAN is a 24h/7d real time radar data monitoring and analysis tool. It calculates Pd and accuracy for individual trajectories. It has full Mode S capabilities and therefore can perform BDS register analysis. TRACKAN uses the RASS-R Data Handler Module (DHM) as radar data I/O. All results are stored in format files.

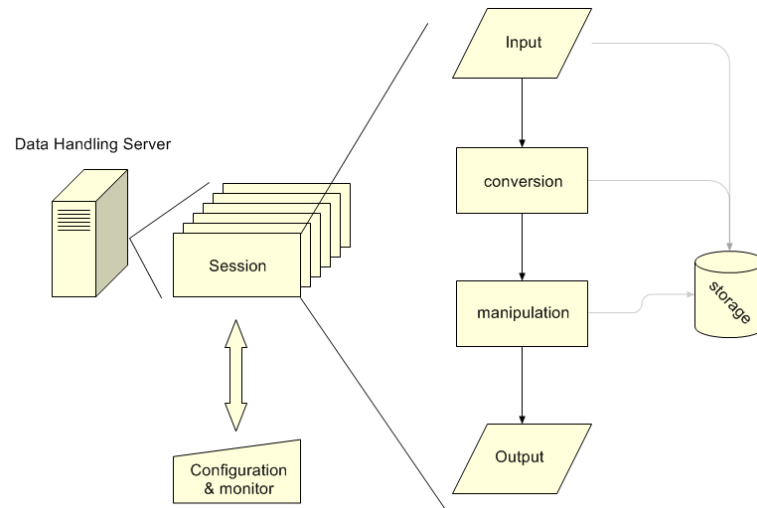


Figure 1-1: TRACKAN data flow

TRACKAN consists out of a central processing unit and several viewers.

1.1. Benefits and possibilities of the system

- 24/7d radar data monitoring and analysis; no snapshot analysis.
- Real time; immediate response to problems.
- Multiple radar data streams may be processed sequentially.
- The same input data may be processed in different ways and be presented in different views.
- Analysis based on individual trajectories; identify problematic transponders.
- Full Mode S capabilities; includes BDS register analysis.
- Client specific demands are easily integrated.
(For example: Status reports and alarm signalling via e-mail, pager, mobile phone messages or www.)
- Multiple history windows for long/short term trend analysis.

2. General Overview

2.1. TRACKAN as part of RASS-R

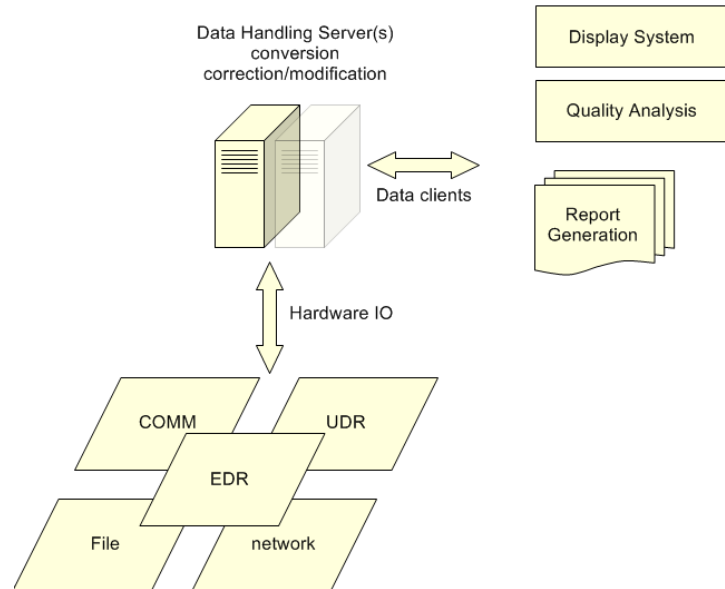


Figure 2-1: RASS-R Structure

The radar data that is converted/corrected/modified by the Data Handler Module is redirected to different components of the RASS-R configuration. One of these RASS-R components is TRACKAN. TRACKAN performs radar data quality analysis.

2.2. TRACKAN processing unit

The TRACKAN processing unit also acts as the main GUI to operate the TRACKAN software. All features are accessed using this GUI. TRACKAN configuration is done through one Configuration window. Radar data analysis results can be presented using different viewers.

2.3. TRACKAN configuration

All configuration of TRACKAN is done using the Configuration window. The Configuration window can be accessed through the TRACKAN GUI. The configuration window allows you to create, edit and enable/disable processing threads in TRACKAN. The last used configuration is always stored and used upon start-up. A configuration includes the desktop layout of the different available windows.

2.4. TRACKAN viewers

TRACKAN has several viewers to present the results of the radar data analysis to the user. Each viewer can be opened multiple times to represent the results in different views. TRACKAN viewers communicate with the TRACKAN processing unit via data containers. A data container is a temporary storage place for the most recent results of the radar data analysis.

2.5. Network operation

TRACKAN uses several TCP/IP ports for different purposes, it is important that these ports are free for use on the target system. The following table shows an overview of the ports used by the TRACKAN.

Table 1: TRACKAN TPC/IP Ports

Port Number	Used by	Usage
5570	TRACKAN	Inter-application communication with DHM

3. Installation, verification and startup

3.1. Running the DHM background server



You might need to be logged on as an administrator or a member of the Administrators group in order to perform some tasks.

In case that the TRACKAN performs analysis on real time data, the Data Handling Module background server needs to be running before the TRACKAN software is started. The Data Handling Module background server can be started using the Windows XP services management console. For more details, please consult the DHM user manual. If the TRACKAN performs analysis on data that was already recorded, it is not necessary to have the DHM running.

3.2. Running the TRACKAN Processing unit

The TRACKAN module can be started from the RASS-R toolbox or the Windows Start Menu. The following window (or similar) will appear.

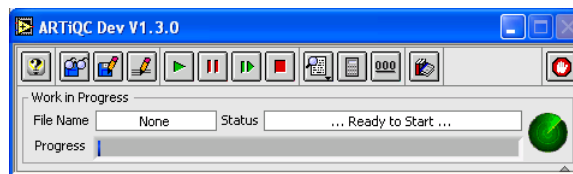



Figure 3-1: TRACKAN main GUI in compact mode

This is the TRACKAN processing unit and main GUI used to operate the TRACKAN tool.



The last used configuration is automatically loaded upon start-up. By clicking the  button (lower right corner) the TRACKAN main GUI is displayed in full mode.

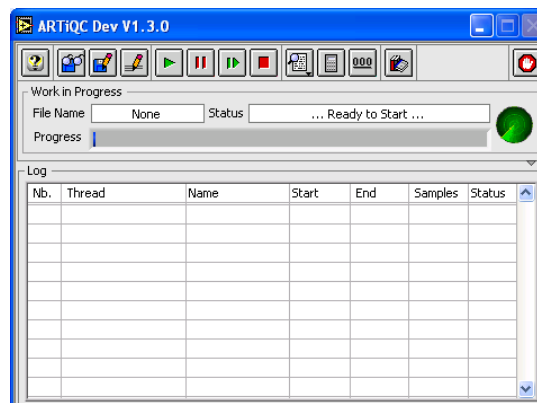



Figure 3-2: TRACKAN main GUI in full mode

4. Configuration

Configuration of the TRACKAN tool is done with the Configuration window which is evoked by clicking the  button in the TRACKAN main GUI. The following window appears:

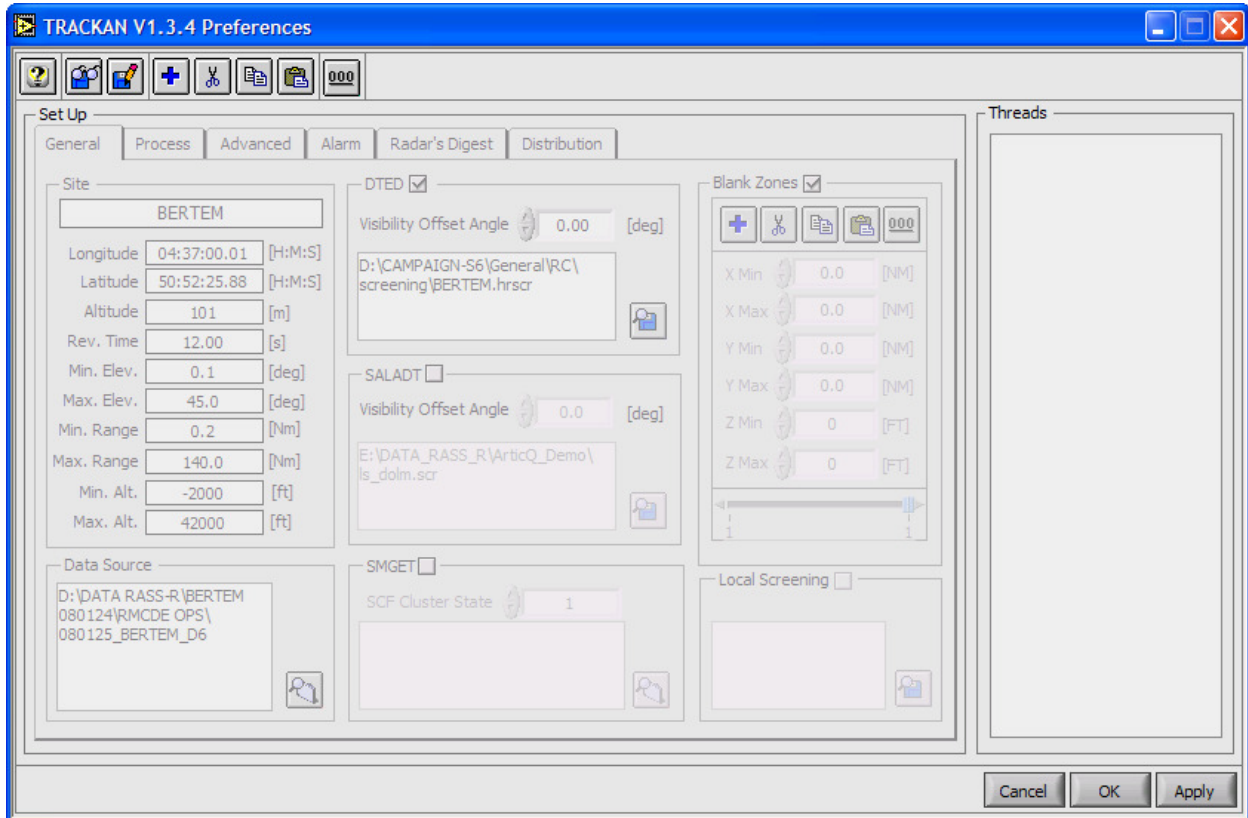


Figure 4-1: TRACKAN configuration window.




Only the first time after installation, no processing threads are defined. All other times, the current processing threads are shown in the configuration window.


A processing thread can be considered a set of parameters that will be applied to a radar data stream in order to perform an analysis. Multiple processing threads can be defined, they will be executed sequentially. One radar data stream can be used in different processing threads to obtain different analysis figures.

4.1. Add/Edit processing threads





Figure 4-2: Menu bar

A new processing thread can be added by clicking the  button. Notice that the “new” thread is added to the list at the right hand side of the configuration window. The settings of the last used thread (or default) are automatically used for the new thread. When multiple threads are defined, use the threads list to select the one of interest by clicking on the corresponding item.

Clicking the  button deletes the selected processing thread from the list.

Clicking the  button copies the selected processing thread into memory.

Clicking the  button pastes the previously copied processing thread into the selected processing thread.

Clicking the  button clears all processing threads from the list. Use the four tabs to navigate through the different thread configuration parameters.

4.1.1. General tab

The general tab contains parameters that are typical for a specific radar data stream: site parameters, radar data source path and coverage maps.


4.1.1.1. Site

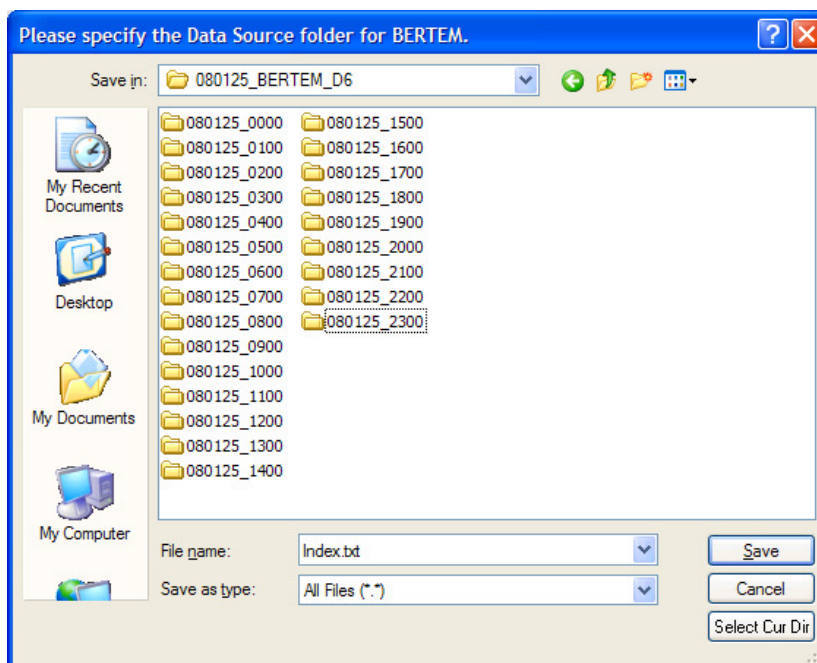


The name of the site will be used throughout the TRACKAN tool to identify a specific processing thread. It is advised to choose this name so that it can easily be interpreted.

Longitude and latitude are in the following format; °:MM:SS.ssss, east and north being positive, west and south being negative. The altitude is the altitude of the antenna above mean sea level in WGS 84. The revolution time is an important parameter for the trajectory reconstruction and therefore needs to be accurate. (Choose 1 second for ADS-B data analysis) Minimum elevation, maximum elevation, minimum range, maximum range, minimum altitude and maximum altitude are used to define the general coverage volume boundaries. Target reports located outside this coverage volume are not taken into account during the analysis.

4.1.1.2. Data source

The data source defines the path where TRACKAN retrieves the radar data to be processed. This path should contain an archive folder created by the DHM. The format of the archive files should be the .D6 format. For more information on how to create a .D6 format archive, please consult the DHM user manual. When you click the open button , a dialog to browse follows. Browse to the folder where all the .D6 files are stored.




It is important to select a folder or group of folders that contains the .D6 files. You cannot select an individual .D6 file!

When the path to the Data Source is correctly filled in, you should see all the files in the Recalculation Window. (See paragraph 5.1)

4.1.1.3. DTED


DTED screening maps are calculated by the RASS-R Coverage Map Calculator (CMC). They originate from Digital Terrain Elevation Data with a resolution of 3 Arcsec. For more details on how to create DTED screening maps, please consult the corresponding user manual.

Click the  button to browse for a DTED screening map. DTED screening files have a .hrscr extension. The default path for the DTED screening maps in RASS-R is:

C:\Program Files\Intersoft Electronics\RASS\Maps\DTED

Use the checkbox to enable/disable the use of the DTED screening map in the TRACKAN tool. The visibility offset angle value is added to the DTED screening map angle to reduce/increase the DTED screening angles.


4.1.1.4. SALADT

SALADT screening files can be imported in the TRACKAN tool. Click the  button to browse for a SALADT screening map. SALADT screening files have a .scr extension.

Use the checkbox to enable/disable the use of the SALADT screening map in the TRACKAN tool. The visibility offset angle value is added to the SALADT screening map angle to reduce/increase the SALADT screening angles.

Refer to [2] for further details.

4.1.1.5. SMGET

SMGET cluster maps can be imported in the TRACKAN tool. Click the  button to browse for a SMGET cluster map. Use the checkbox to enable/disable the use of the SMGET cluster map in the TRACKAN tool. The value of the SCF cluster state is mandatory in order to use the SMGET cluster maps.

Refer to the “Mode-S System Map Generator and Extractor Tool” on EUROCONTROL website for further details.

4.1.1.6. Blank Zones

Blank zones are areas defined by the user to be excluded from the analysis. Use the checkbox to enable/disable the use of the blank zones in the TRACKAN tool. There is no limit on the number of blank zone within a processing thread. A blank zone is defined as a cubical volume (X min, X max, Y min, Y max, Z min and Z max) within the general coverage volume.

4.1.1.7. Local Screening

A local screening file is a tab separated file containing a table of the local screening angle versus azimuth. (For example if you do not have a DTED or SALADT file)

Finally, the result can be as follows:

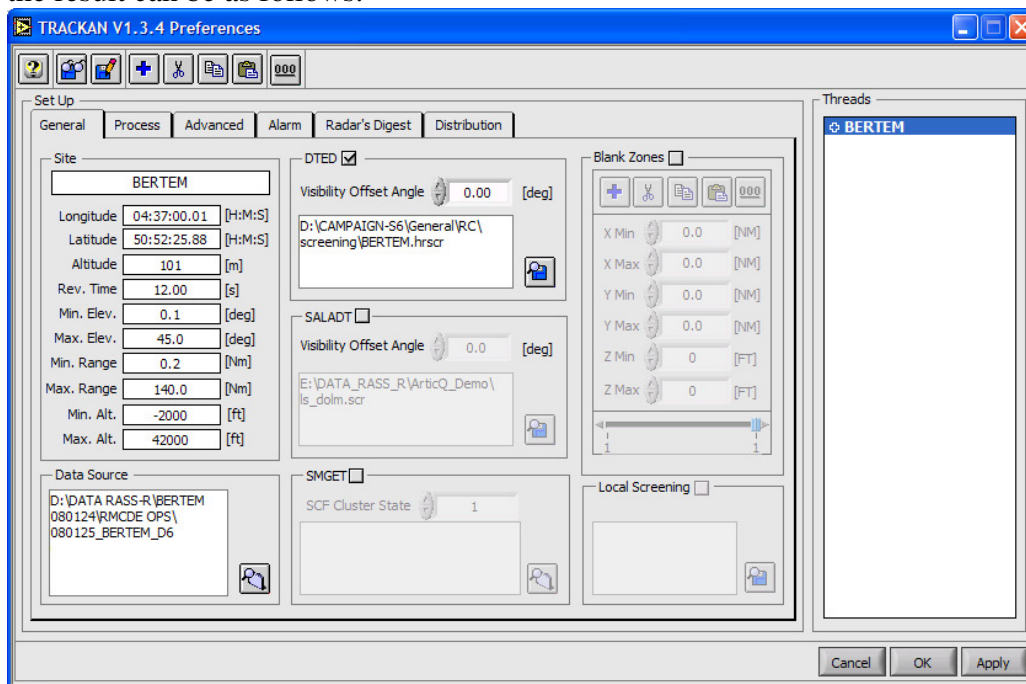


Figure 4-3: Preferences - General tab

4.1.2. Process tab

The processing tab contains parameters that are typical for a specific way of processing the radar data: parameters and exclude list.

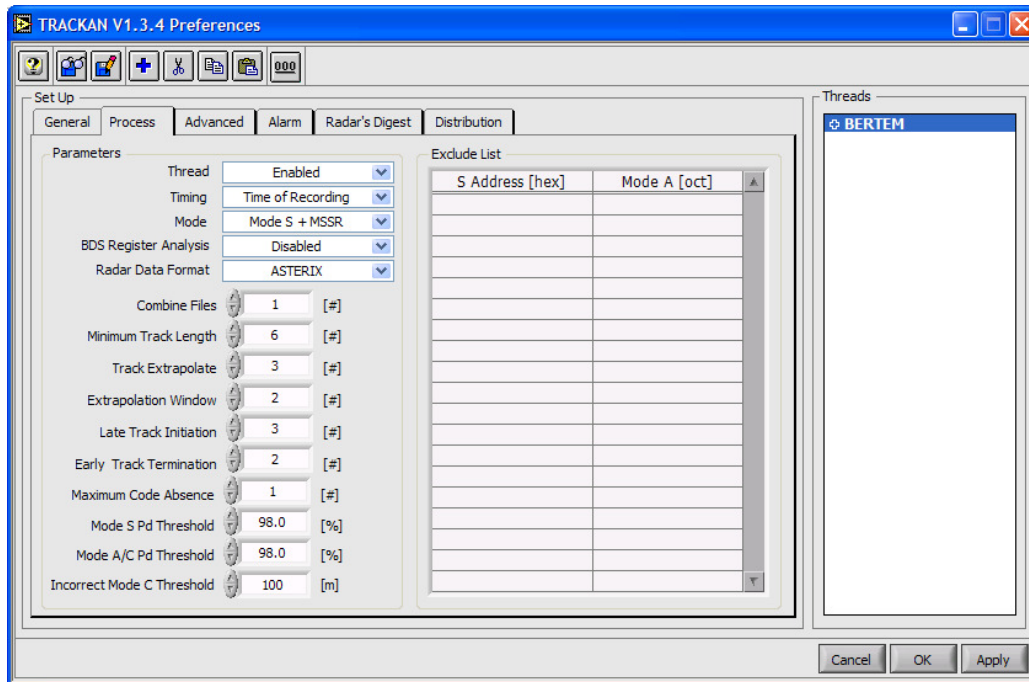


Figure 4-4: Preferences - Process tab

4.1.2.1. Parameters

A processing **Thread** can be enabled/disabled using the processing selector. A disabled processing thread is not executed during the processing, but the processing parameters remain available for later use.

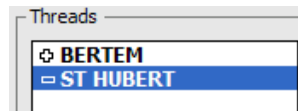


Figure 4-5: Enabled (Bertem) and Disabled (St-Hubert) thread

When available it is advised to select **Time of Detection** for timing purposes. **Time of Recording** includes the processing and transmission delay and can possibly be less accurate for the analysis.

Use the **Mode** selector to excluded/included specific types of detection during the analysis:

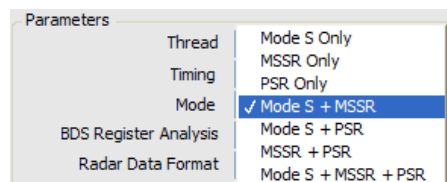


Figure 4-6: Different modes

Detection types that are excluded are not taken into account during the processing and will be categorized as Non Initiated.

The **BDS Register Analysis** can be enabled/disabled individually for each processing thread. Notice that enabling the BDS register analysis will increase the required processing time.

The **Radar Data format** can be Asterix or Aircat (2 possibilities).

Radar Data Format	✓ ASTERIX
Combine Files	AIRCAT SOH SELECT ADDRESS DLE STX DATA DLE ETX BCC1 BCC2 AIRCAT SELECT DATA

Figure 4-7: Radar data format

Combine a number of files in order to have a bigger data set for the analysis. The combined files will act as a sliding window each time a new file becomes available.



Because the analysis is trajectory based, it is advised to combine a number of files for a period equal to the average time a target spends in the coverage.

Below the **Minimum Track Length**, a trajectory is not used in the processing.

The individual target reports will be marked as not initialized in the TRACKAN Main Viewer.

The **Track Extrapolate** parameter defines the number of extrapolated target reports added at the beginning and the end of each trajectory (for the extrapolation on the beginning of a track, you need to combine files. Otherwise the TRACKAN does not know whether the track really started or it is just present in this .D6 file).

This extrapolation is done using the average speed and heading calculated with the last N target reports, N being the **Extrapolation Window** parameter. The extrapolated target reports are checked against the defined coverage volume and each extrapolated target report is marked as in/out coverage.



Extrapolated target reports marked as in coverage are considered as missed by the radar and are taken into account during the analysis. (Red color in Viewer)

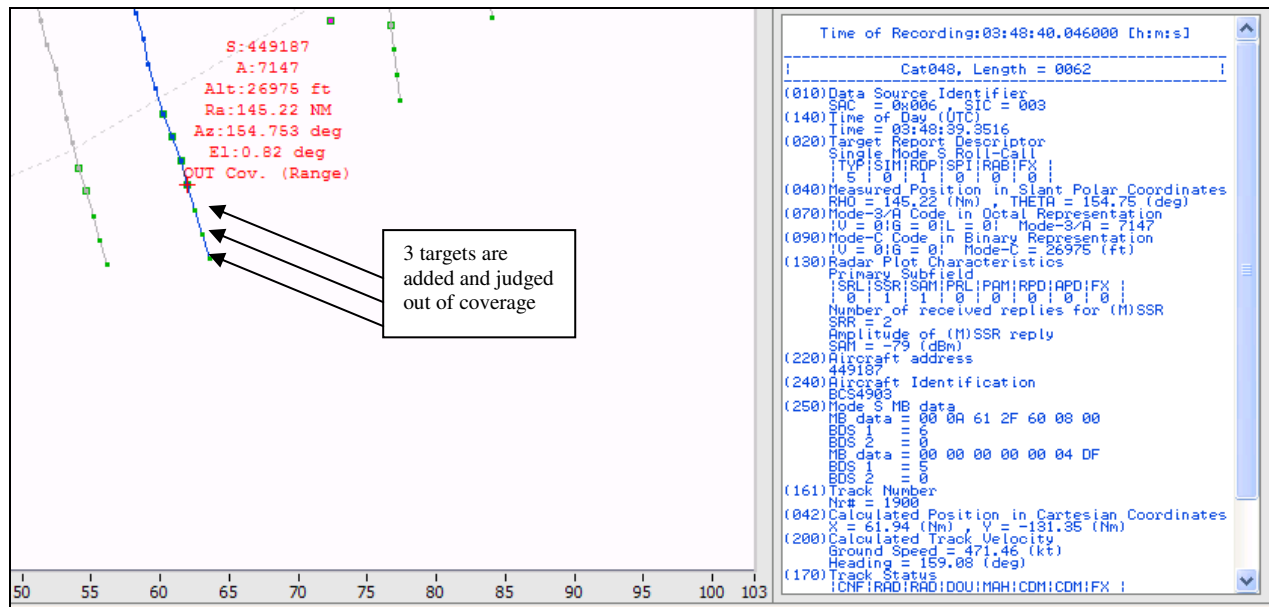


Figure 4-8: Track Extrapolate=3

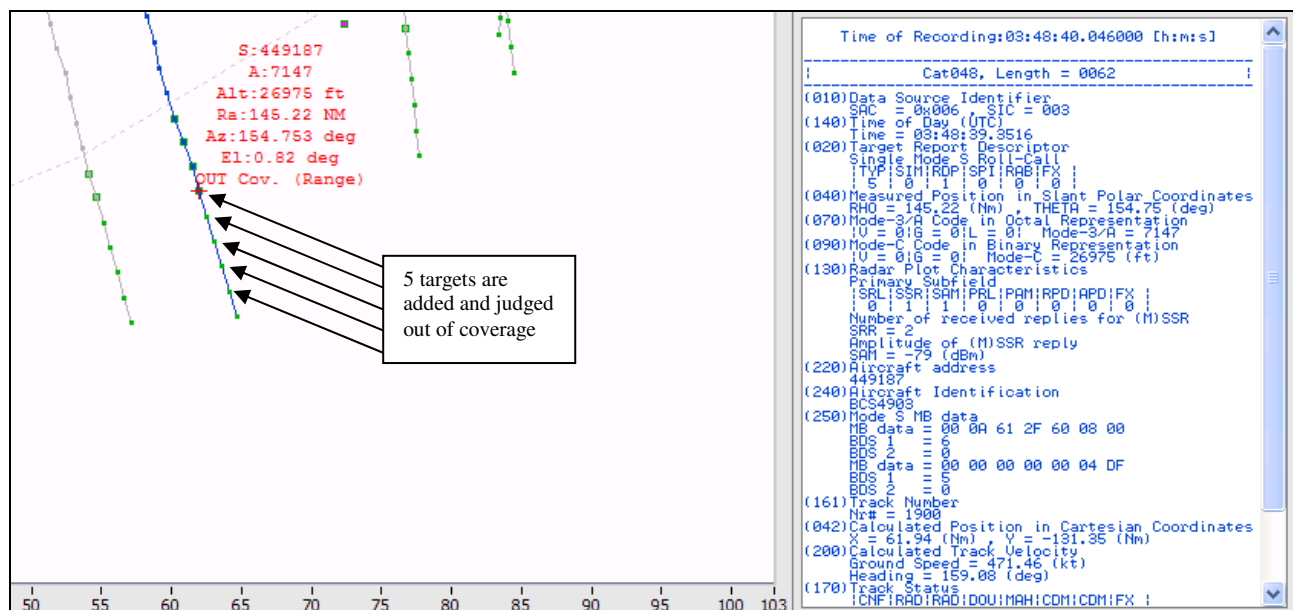


Figure 4-9: Track Extrapolate=5

Trajectories are marked as **Late Track Initiation** when the number of in coverage extrapolated target reports added at the beginning of a trajectory exceeds the Late Track Initiation value. Similar, trajectories are marked as **Early Track Termination** when the number of in coverage extrapolated target reports added at the end of a trajectory exceeds the Early Track Termination value.

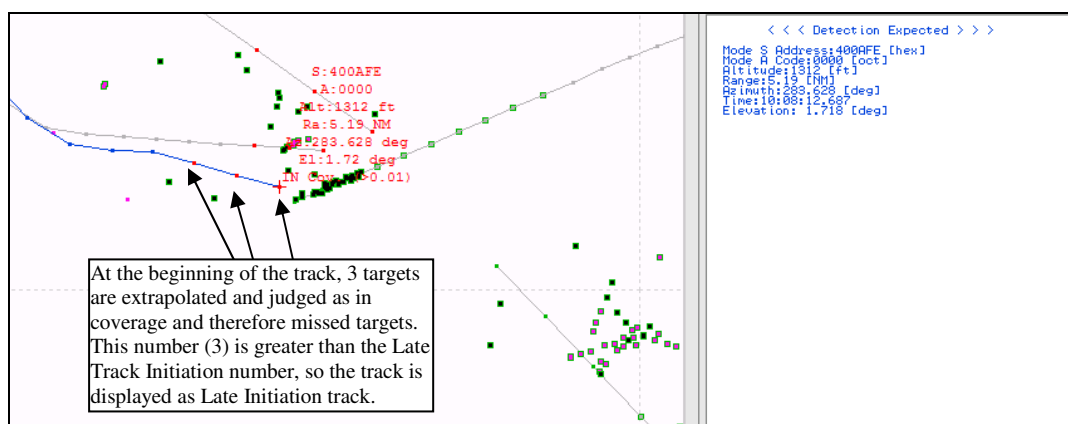


Figure 4-10: Late Track initiation

The **Maximum Code Absence** parameter is used to flag trajectories with at least the predefined number of consecutive Mode3/A code, mode C code or Mode S address absences.

Mode S/SSR Trajectories with a Pd below the **Mode S/SSR Pd** threshold are marked below Pd, mode S/SSR Trajectories with a Pd above the Mode S/SSR Pd threshold are marked above Pd. **Incorrect Mode C Threshold [m]**: the height difference between the predicted by the C-code reconstruction and actual C-code for flagging incorrect Mode C Code.

Based on several parameters above, the results can be filtered with the Display functionality in the Viewer. (See paragraph 6.4.1)

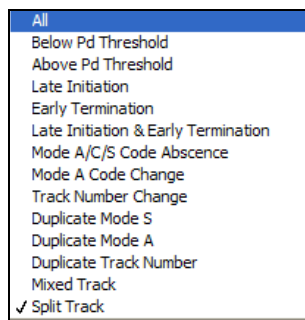


Figure 4-11: Viewer display options

4.1.2.2. Exclude list

Use the exclude list to exclude specific trajectories from the analysis. Trajectories can be identified using a Mode S address [hex] or a Mode A code [oct].

4.1.3. Advanced Tab

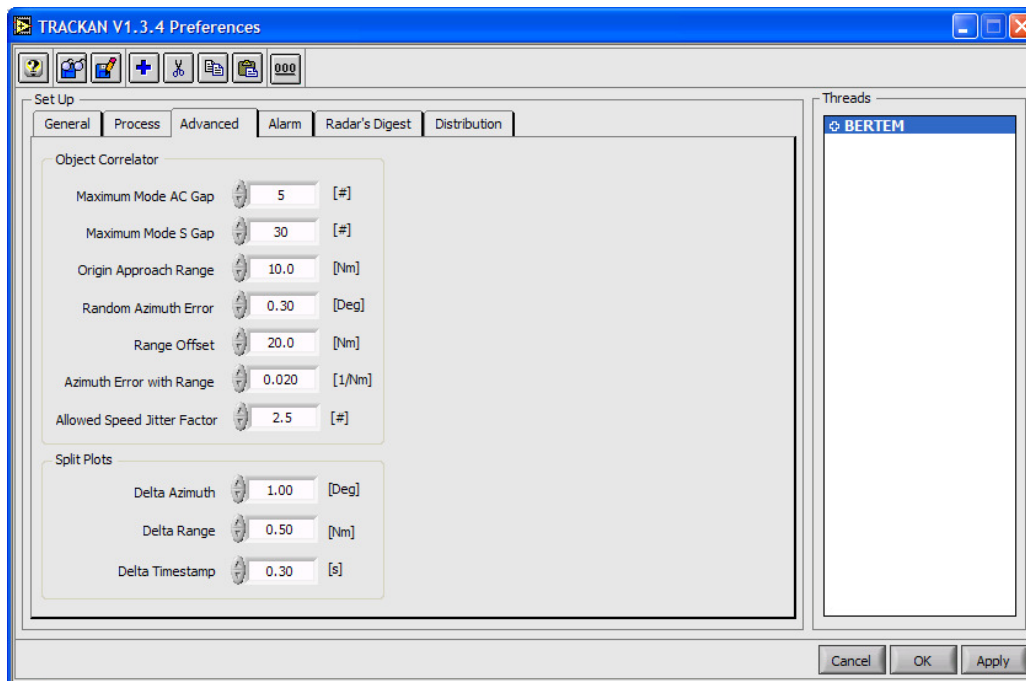


Figure 4-12: Preferences - Advanced tab

4.1.3.1. Object correlator

The Object Correlator correlates the individual plots and tries to build tracks again, based on the parameters below. These correlated tracks are visible as the Nr. in the Trackan Viewer. In this way, the TRACKAN can be a reference for analysis for different radar sources which were influence of different tracker systems.

Maximum MODE AC Gap: a parameter setting the maximum SSR trajectory gap bridged by the algorithm

Maximum MODE S Gap: a parameter setting the maximum MODES trajectory gap bridged by the algorithm

Origin Approach Range [NM]: the range band where the next plot can be expected to have any azimuth (applicable for the vicinity of the radar origin when a fast moving target may produce azimuth change of about 180 degrees or greater.)

The following three parameters are designed to model the random azimuth error in general using the formula

$$\sigma_{Az} = \sigma_{Az0} + \alpha(R - R_0)$$

Where

- R0 is the **Range Offset [NM]**
- σ_{Az0} is the **Random Azimuth Error [deg]**
- α is the **Azimuth Error with Range [NM]**

Allowed Speed Jitter Factor:

4.1.3.2. Split Tracks

Three following parameters are dedicated for detection of the split plots:

- Delta Azimuth [deg]
- Delta Range [NM]
- Delta Timestamp [s]

Tracks that are assigned the label “Split Track” can be displayed with the following menu:
(See paragraph 6.4.1)

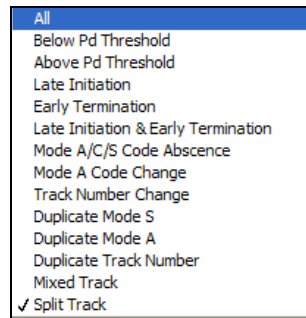


Figure 4-13: Viewer display options

4.1.4. Alarm tab

The alarm tab contains settings to trigger alarms when certain predefined values are exceeded.

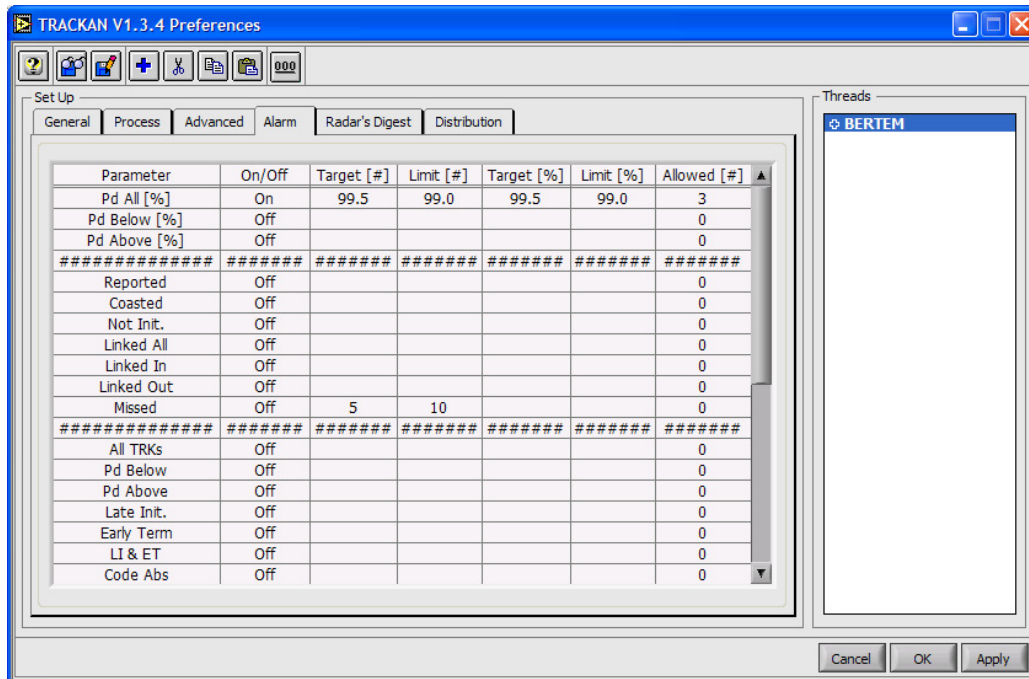


Figure 4-14: Alarm configuration window

Switch an individual alarm on/off by typing on or off in the corresponding table entry. Every parameter can have a target value and a limit value, the target value being the expected or desired value, the limit value being the alarm trigger value.

When the target value is greater than the limit value, an alarm is triggered whenever the measured value is smaller than the limit value and this for a consecutive number of times equal to the Allowed value plus one.


Explanation of the theoretical example as in the figure above:

- The target of Pd is 99.5%. When the Pd drops to 99.0% or lower for 4 consecutive scans (3+1), it will trigger an alarm
- The target of Missed targets is 5. When the number of missed targets increases till 10 or higher in one scan, it will trigger an alarm.



4.1.5. Radar's Digest tab

This tab allows the user to accumulate a specific set of trajectories over a longer period. Use the filter/category controls to define a specific set of trajectories and check the box to enable the processing. All the trajectories that comply are stored in a separate file called Digest 1. This file has can be used as a data source in an extra processing thread allowing the automatic processing of the accumulated set of trajectories just as any of the other treads.


4.1.6. Distribution tab

The distribution tab contains the information required to distribute the results of the radar data analysis according to the user's needs. In the current version of the TRACKAN tool, the results can only be saved to disk. All other possibilities are for future developments. Click the  button to browse for a destination path. Use the checkbox to enable/disable the saving of the result to disk. All results are stored in file format.

4.2. Save/Load configurations

A complete configuration can be saved to disk by clicking the  button. Notice that the TRACKAN main GUI also has this save configuration button. A complete configuration can be loaded from disk by clicking the  button. Notice that the TRACKAN main GUI also has this load configuration button.

5. Running

Running TRACKAN is done by pressing the  button in the main GUI. TRACKAN will be idle until a file becomes available from the DHM. When a .D6 file is released by the DHM, processing by TRACKAN will start automatically. This process is repeated every time a new file is made available by the DHM. The processing status and progress can be monitored using the work in progress information.

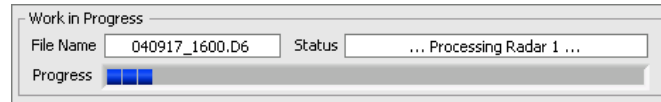




Figure 5-1: Work in progress information.





This means that there is a processing delay on the results equal to the period of one file and that there is an update of the results every period of one file.

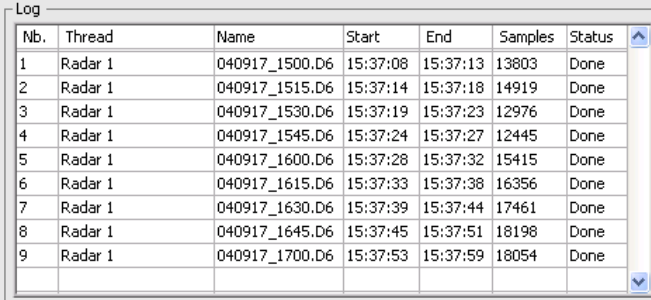
Stopping TRACKAN is done by pressing the  button. TRACKAN will always complete the work in progress before the processing is stopped. TRACKAN will resume with the next available file when the  button is pressed.



The combination of stop and restart will automatically clear all results from memory. This means that all history is cleared.


Click the  button to pause TRACKAN. TRACKAN will always complete the work in progress before the processing is paused. By clicking the  button, the next and only the next file will be processed when it becomes available.

Whenever a file is processed, an entry is put in the log. The status of the file is changed to done.




Nb.	Thread	Name	Start	End	Samples	Status
1	Radar 1	040917_1500.D6	15:37:08	15:37:13	13803	Done
2	Radar 1	040917_1515.D6	15:37:14	15:37:18	14919	Done
3	Radar 1	040917_1530.D6	15:37:19	15:37:23	12976	Done
4	Radar 1	040917_1545.D6	15:37:24	15:37:27	12445	Done
5	Radar 1	040917_1600.D6	15:37:28	15:37:32	15415	Done
6	Radar 1	040917_1615.D6	15:37:33	15:37:38	16356	Done
7	Radar 1	040917_1630.D6	15:37:39	15:37:44	17461	Done
8	Radar 1	040917_1645.D6	15:37:45	15:37:51	18198	Done
9	Radar 1	040917_1700.D6	15:37:53	15:37:59	18054	Done

Figure 5-2: Work done information.

At any time, all results in memory can be cleared by clicking the  button. This has the same effect as stopping and starting the TRACKAN tool.

5.1. Recalculation

While TRACKAN is running, any file that already has been processed can be re-processed at any time. Click the  button to open the Recalculation window. The following window (or similar) will appear.

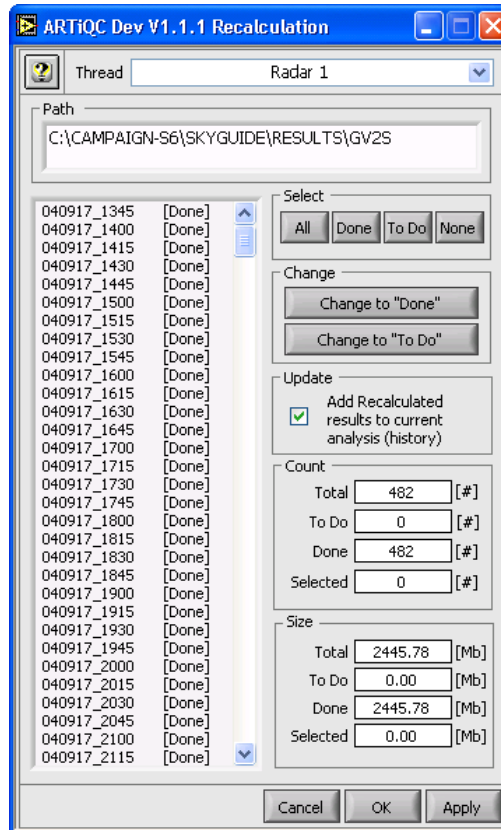
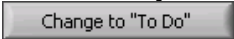
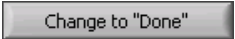



Figure 5-3: Recalculation window.


The thread selector can be used to select a specific thread for the recalculation. The path to the archive and a list of the available files is displayed. All files that are already processed are indicated by [Done]. Select the file of interest or shift-click for selecting multiple files. Alternatively, use the row of select buttons to define a specific selection range. Use the  button to change the status of the selected files from [Done] to [To Do]. Use the  button to change the status of the selected files from [To Do] to [Done].




Uncheck the Update checkbox when the results of the recalculation do not need to be added to the current analysis results (history).

5.2. On-line help

Clicking the  button opens the on-line user manual. The on-line user manual is in PDF format.

Clicking the  button opens the context help window. Position the cursor over a control to get context help for that control.

5.3. Quitting TRACKAN

Click the  button to quit TRACKAN. The current configuration will automatically be stored and re-used as default configuration next time. All open window will be closed automatically and their layout is saved as part of the configuration.



The layout (position and settings) of all the open TRACKAN windows will be stored as part of a configuration. The content of the windows is NOT part of a configuration.

6. Software components

This chapter provides an overview of all the available software components in TRACKAN. Some of them have already been described in the paragraphs above.

6.1. TRACKAN Main GUI

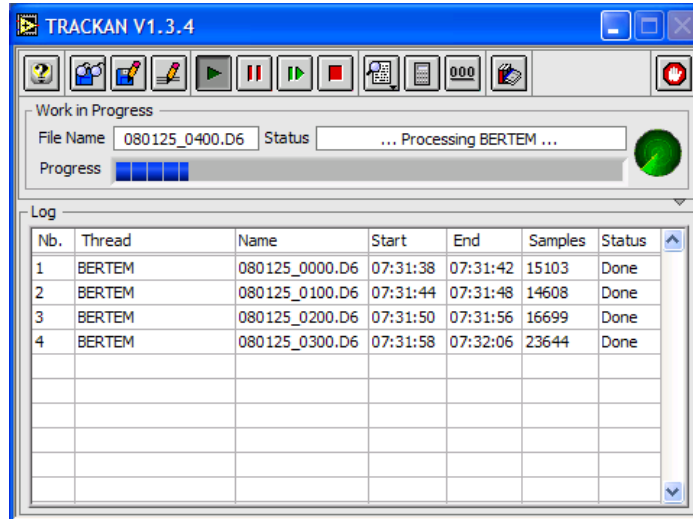


Figure 6-1: TRACKAN Main GUI in action

The use of the TRACKAN main GUI is described in paragraph 5.

6.2. Configuration window

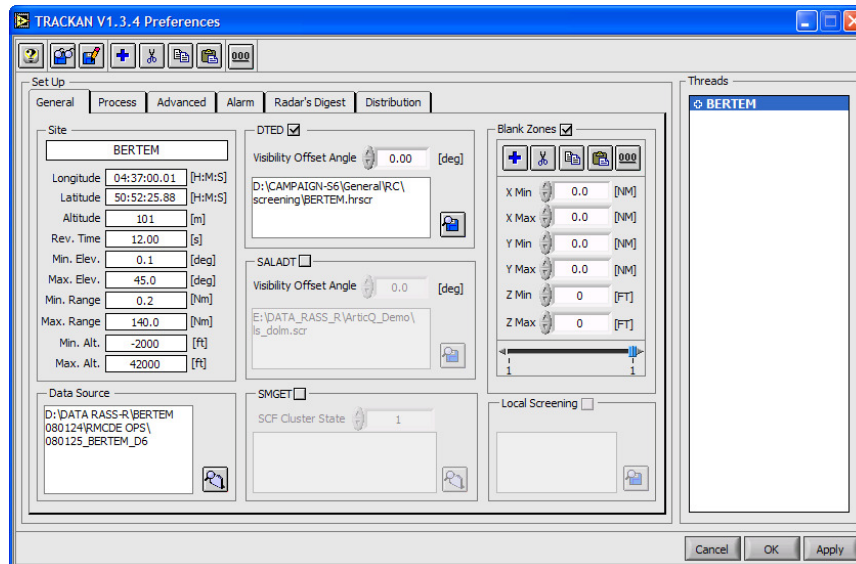


Figure 6-2: TRACKAN Configuration window

The use of the TRACKAN configuration window is described in paragraph 4.

6.3. Recalculation window

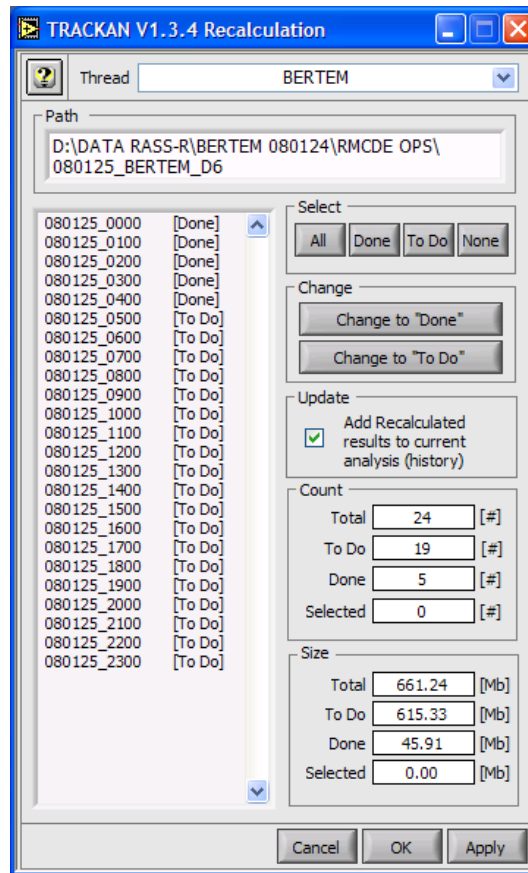


Figure 6-3: TRACKAN Recalculation window

The use of the TRACKAN recalculation window is described in paragraph 5.

6.4. Viewers

The last processed set of files for each processing thread is available for real time viewing and analysis. They remain available until the next set of files is processed. This way the latest up-to-date information is always ready for viewing and analysis. Several viewers are at the disposal of the user to monitor and verify these analysis results in real time.



Each type of viewer can be opened multiple times with different settings. This allows the user to represent the results in different ways.

All Viewers can be launched from the TRACKAN Main GUI by using the  drop down menu.




Figure 6-4: Viewer selection drop down menu

The following paragraphs explain the use of these viewers in more detail.

6.4.1. TRACKAN Main Viewer

The TRACKAN Main Viewer always displays the latest processed data set for a specific processing thread. Whenever a new data set is processed, the TRACKAN Main viewer is updated automatically.

There is an entry in the table for every individual trajectory encountered in the analysis. Individual trajectories can be enabled/disabled by right clicking the trajectory of interest and selecting **Enable/Disable** from the popup menu. The symbol in front of the trajectory will change from ✓ to ✗ when it becomes disabled. Disabled trajectories are not shown in the PPI display.

The content of the table can be customised by the user. The table can be sorted in ascending/descending order by clicking on the corresponding column header in the table. The table can be **filtered** using the Filter function. A specific set of transponders can be selected by using the **Display selector**. The customised table/PPI content can be exported to a .csv/.bmp formatted file by clicking the  button and selecting the appropriate menu item.

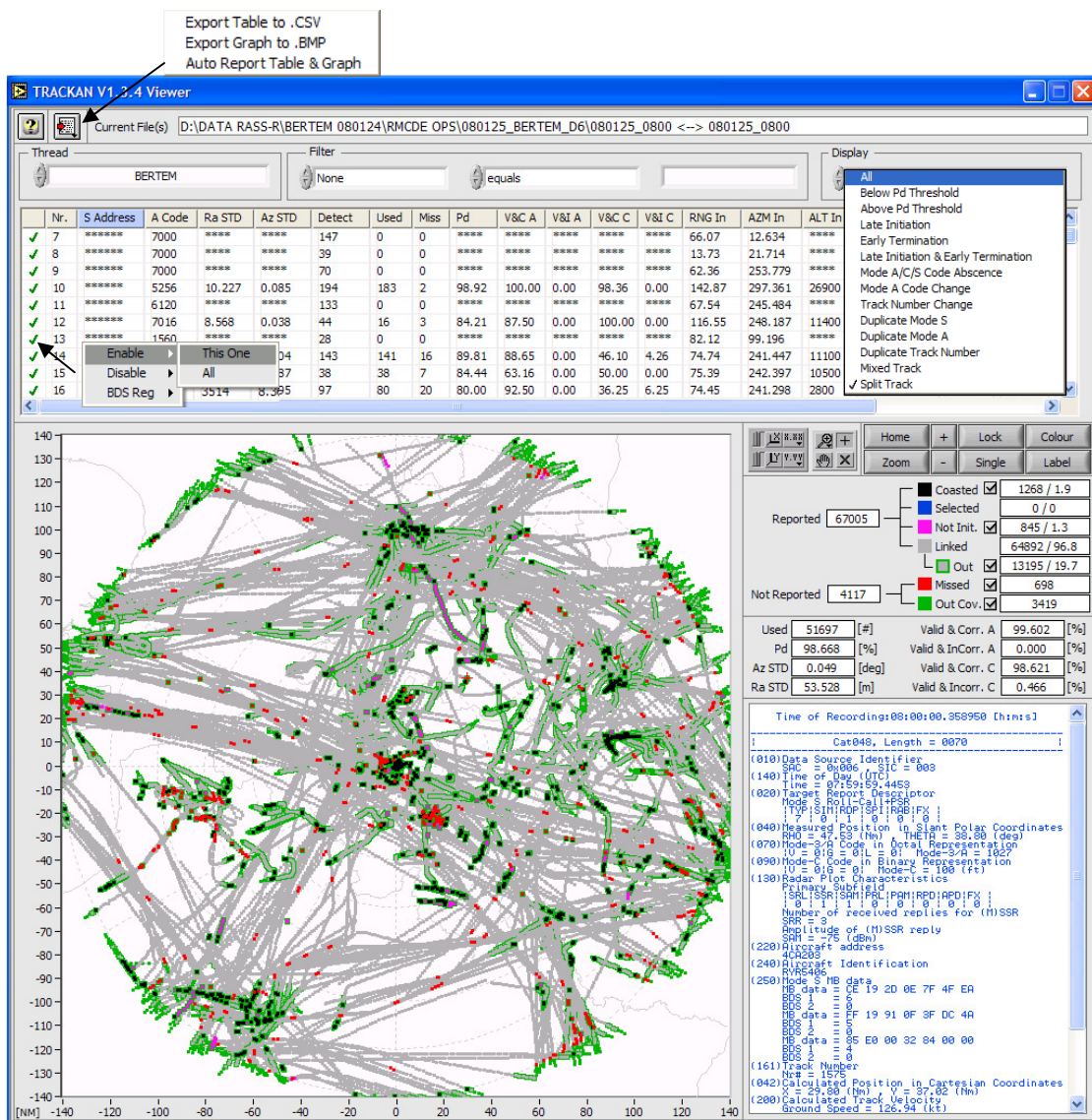


Figure 6-5: TRACKAN History window

The PPI display below the table show the table content in a graphical representation. Only trajectories listed in the table are drawn in the PPI display. The trajectory corresponding with the selected entry of interest in the table is colored blue in the PPI display. The TRACKAN Main Viewer legend is as follows:

- **Coasted** : coasted target reports (= miss reported by the radar)
- **Selected** : selected trajectory
- **Not Init.** : not initialized (meaning assigned by TRACKAN, based on minimum trajectory length not reached)
- **Linked** : reported target in coverage linked to trajectory (meaning assigned by TRACKAN, based on object correlator parameters)
- **Out** : reported target out coverage linked to trajectory (meaning assigned by TRACKAN, based on coverage file)
- **Missed** : Missed in coverage by the radar and added by the TRACKAN analysis.
- **Out Cov.** : Missed out coverage by the radar and added by the TRACKAN analysis.

Use the corresponding checkboxes to add/deleted specific data sets from the PPI display.

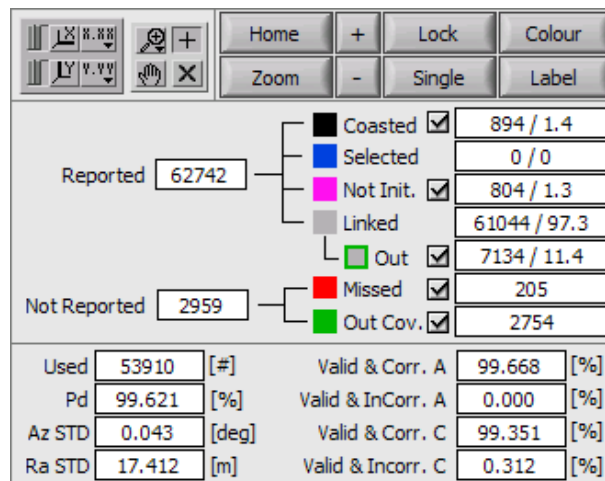


Figure 6-6: Legend and statistics

Explanation about the different figures:


- The number of reported targets is split in number of coasted, not initiated and linked targets, both expressed in absolute and per cent value:
 $62742 = 894 + 804 + 61044$ or $100\% = 1.4\% + 1.3\% + 97.3\%$
- 7134 targets or 11.4% from 62742 reported targets are linked but out of coverage.
- $62742 - (894 + 804 + 7134) = 53910$ are used for the Pd calculation
- $Used - missed = 53910 - 205$ gives a Pd of 99.621% from 53910.





If the number of used targets is zero (because for example all targets are assumed as out of coverage) no statistics will be calculated.

Click the **Home** button to view the full scale PPI.

Click the **Zoom** button to automatically zoom to the selected trajectory +10%, or **+**/**-** to zoom stepwise. Click the **Single** button to display the selected trajectory only. Click the **Lock** button to lock the cursor onto the selected trajectory. Click the **Colour** button to give each trajectory a different color. Click the **Label** button to display a label attached to the cursor. Press the space bar to rotate the label content.

Click **X** to enable the cursor, click the **+** button to center the cursor and  to drag the PPI view.

Click  to enable the view select window. Use the standard Labview menus for scaling, precision, color etc. 

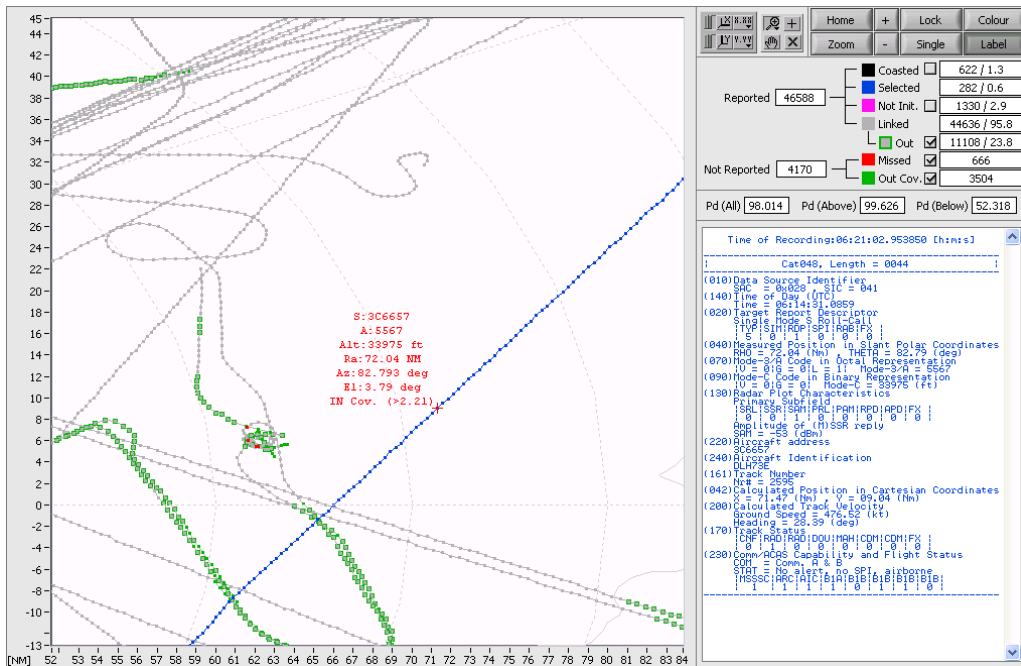


Figure 6-7: Detailed PPI view with label and corresponding ASTERIX data

6.4.2. TRACKAN History Viewer

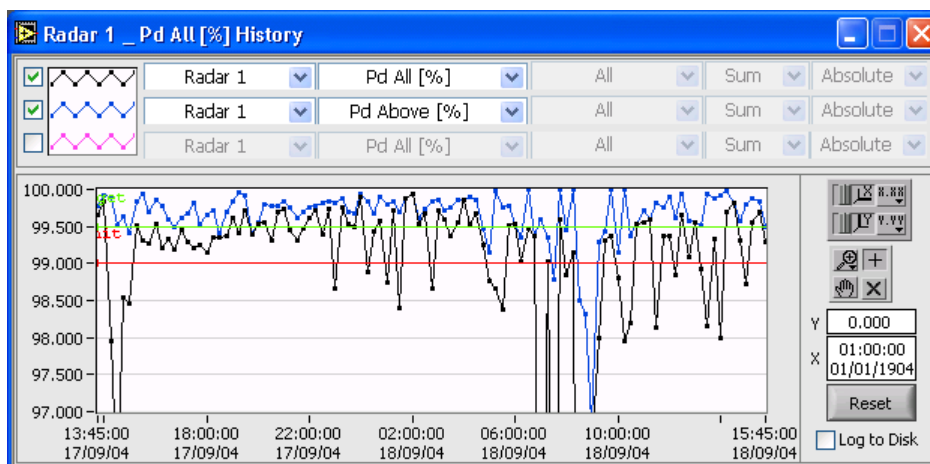


Figure 6-8: TRACKAN History window

The top row selectors allow any parameter from any processing thread to be displayed in the history window. Every set of processed files adds an entry in the histogram window. One history window can display up to three different parameters from one processing thread or one parameter from three different processing threads or any combination of the above. Whenever alarm levels are defined in the configuration window (see paragraph 4) they will be displayed in the history window as a green (target value) and a red (limit value) line.



Alarm settings are only applicable for the top row selectors. This means that there can only be one alarm setting active for each history window.

When an alarm stage is reached, the history window will turn red and the title bar will flash as long as the alarm stage is maintained. When the alarm stage is released, the window will stay red as an indication that an alarm stage has been encountered. Click the button to reset the alarm conditions.

The content of the history window can be logged to disk (.csv format) by checking the Log to Disk box. Every increment in the history window is added to log file. This way, the log file is always updated with the latest information. Switching on the log function will allow the user to browse for a destination file.

6.4.3. TRACKAN Histogram Viewer

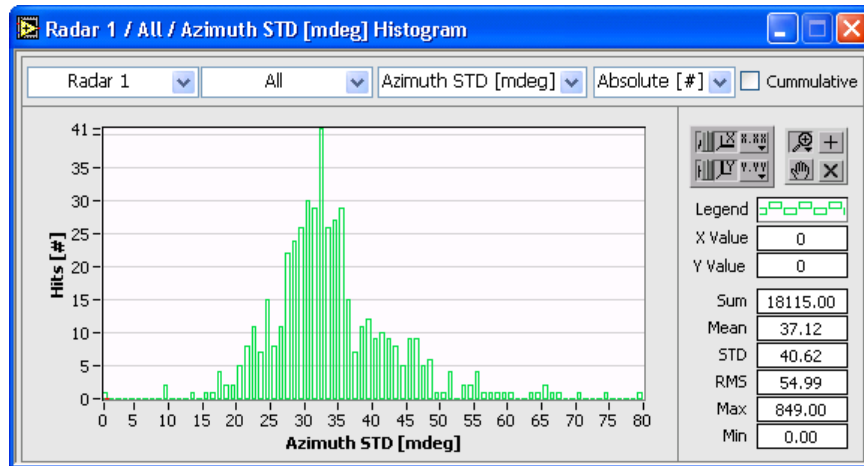


Figure 6-9: TRACKAN Histogram window

The top row selectors allow any parameter from any processing thread to be displayed in the histogram window. On the right hand side the statistics calculated from the histogram are shown. A cursor can be put on the histogram to query specific values in more detail.

6.4.4. TRACKAN BDS Register Viewer

Whenever Mode S data is available (ASTERIX cat048), the BDS register analysis is automatically enabled. Select the thread of interest with the thread selection menu.

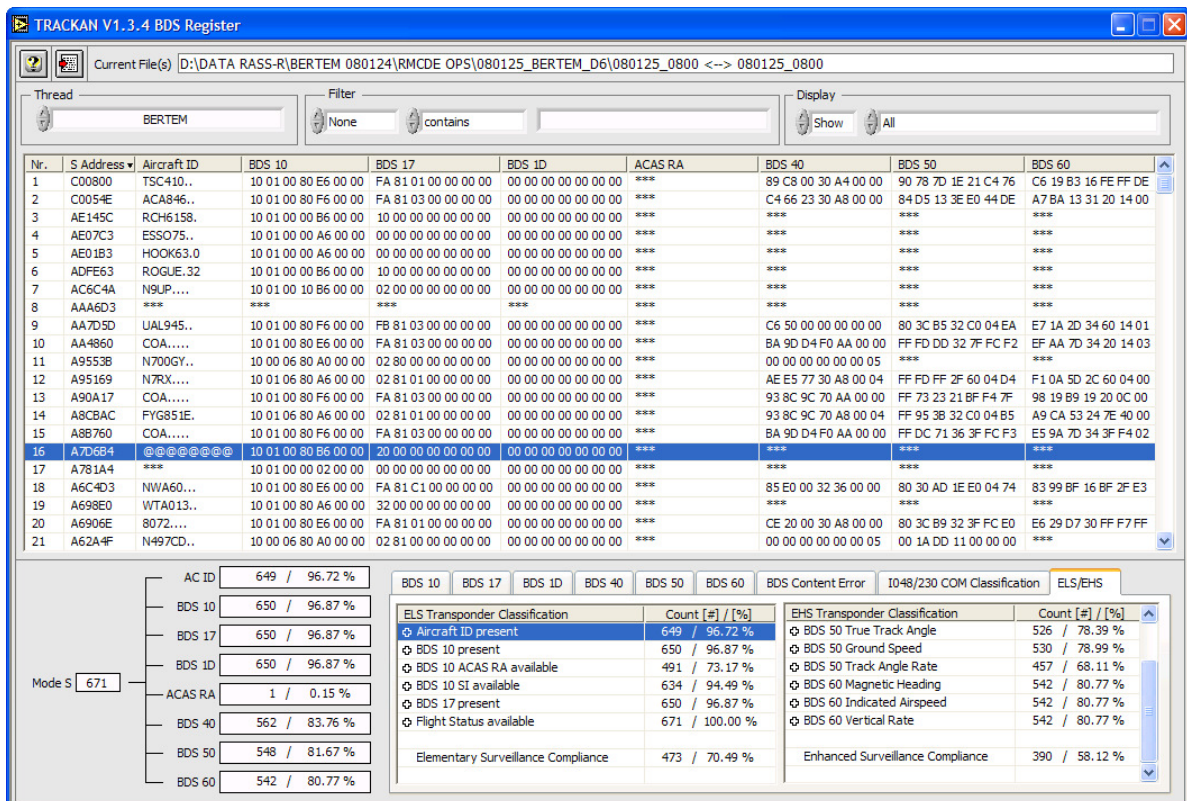



Figure 6-10: TRACKAN BDS register window

There is an entry in the table for every Mode S address encountered in the analysis.



The latest reported aircraft ID, BDS10, BDS17, BDS1D, ACAS RA, BDS40, BDS50 and BDS60 are displayed in the table. This information is only available when it is present in the ASTERIX cat048 radar data stream.

The content of the table can be customised by the user. The table can be sorted in ascending/descending order by mode S address or aircraft ID by clicking the corresponding column header. The table can be filtered using the value of the mode S Address or the content of the aircraft ID using the Filter function. Use a point (.) as wild card for the filter value. Specific set of transponders can be shown or hidden by using the two Display selectors. The customised table content can be exported to a .csv formatted file by clicking the  button.

The detailed content of the BDS registers for a specific transponder (Mode S address) can be displayed by right clicking on the entry of interest. A popup menu appears that allows the user to open a BDS register float window containing the detailed and translated BDS register content for that specific Mode S address.

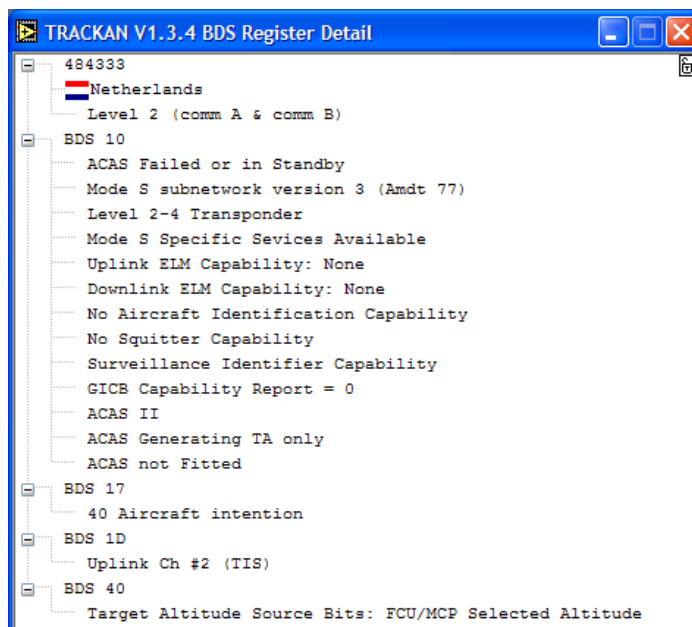

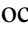


Figure 6-11: TRACKAN detailed BDS register window

Click one of the  buttons to view more details of the BDS register content or right click on the window and select “open all” from the popup menu. From the same popup menu, the detailed BDS register content of an individual transponder can be exported to a .csv formatted file.

Use the  button to lock the window content to a specific transponder. Alternatively, the window content will be updated according to the selection (blue line). Multiple detailed BDS content windows can be opened simultaneously.

By selecting the Timeline presentation, an overview of all the BDS register activity for the selected Mode S address is given in a single window. Use the cursor in the top left graph to select a specific BDS register activity.

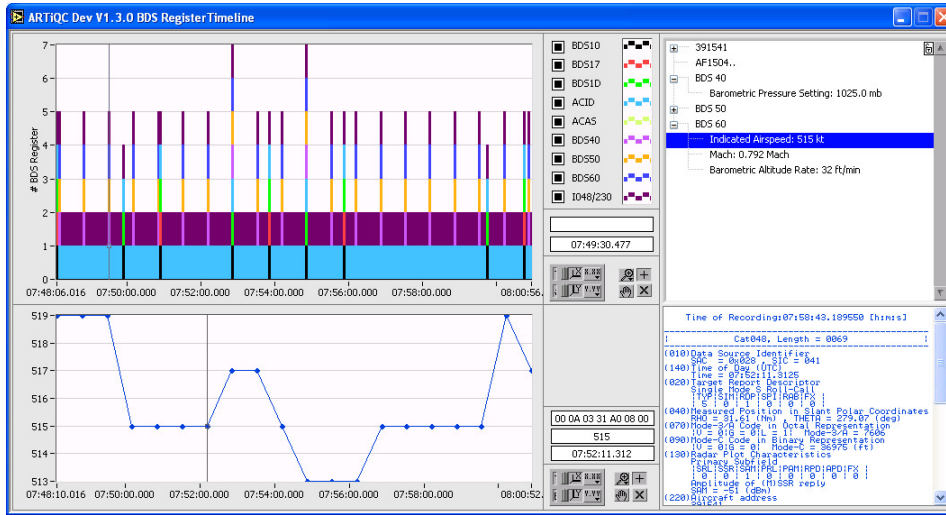


Figure 6-12: TRACKAN BDS Register Timeline representation

Below the table a general overview of the BDS register content is displayed. Each time two values are presented: absolute [#] and relative [%]. Use the tabs to get more detailed information for each of the BDS registers and their content.

6.4.4.1. ELS/EHS

This tab calculates the percentage of Elementary Surveillance (ELS) compliant and Enhanced Surveillance compliant (EHS) Mode S transponders. The ELS/EHS criteria are according to the latest EUROCONTROL rules on ELS/EHS.

BDS 10		BDS 17		BDS 1D		BDS 40		BDS 50		BDS 60		BDS Content Error		I048/230 COM Classification		ELS/EHS	
ELS Transponder Classification		Count [#] / [%]		EHS Transponder Classification		Count [#] / [%]											
<input checked="" type="checkbox"/> Aircraft ID present		74 / 56.49 %		<input type="checkbox"/> BDS 50 Roll Angle		3 / 2.29 %											
<input checked="" type="checkbox"/> BDS 10 present		126 / 96.18 %		<input checked="" type="checkbox"/> BDS 50 True Track Angle		3 / 2.29 %											
<input type="checkbox"/> BDS 10 ACAS RA available		115 / 87.79 %		<input checked="" type="checkbox"/> BDS 50 Ground Speed		3 / 2.29 %											
<input checked="" type="checkbox"/> BDS 10 SI available		30 / 22.90 %		<input checked="" type="checkbox"/> BDS 50 Track Angle Rate		3 / 2.29 %											
<input type="checkbox"/> BDS 17 present		23 / 17.56 %		<input type="checkbox"/> BDS 60 Magnetic Heading		11 / 8.40 %											
<input checked="" type="checkbox"/> Flight Status available		131 / 100.00 %		<input checked="" type="checkbox"/> BDS 60 Indicated Airspeed		11 / 8.40 %											
Elementary Surveillance Compliance		26 / 19.85 %		<input checked="" type="checkbox"/> BDS 60 Vertical Rate		11 / 8.40 %											
				Enhanced Surveillance Compliance		3 / 2.29 %											

Figure 6-13: ELS/EHS detail

These rules can be loosened or tightened by double clicking on the corresponding table entry. Disabled rules are not taken into account for the calculations.

GLOSSARY

A	ACP	Azimuth Count Pulse.
	ARP	Azimuth Reference or Reset Pulse.
	Asterix	All Purpose Structured Eurocontrol Surveillance Information Exchange
	Asterix Data Block	Unit of information seen by the application as a discrete entity by its contents. A Data block contains one or more Record(s) containing data of the same category.
	Asterix Record	A collection of transmitted Data Fields of the same category.
B	Baud	Unit of signal frequency in signals per second. Not synonymous with bits per second since signals can represent more than one bit. Baud equals bits per second only when the signal represents a single bit.
C	CAT001	Monoradar Data Target Reports, from a Radar Surveillance System to an SDPS (plots and tracks from PSRs, SSRs, MSSRs, excluding Mode S and ground surveillance)
	CAT002	Monoradar Service Messages (status, North marker, sector crossing messages)
	CAT034	Monoradar Service Messages, next version of CAT002
	CAT048	Monoradar Data Target Reports, next version of CAT001
	Cumulative Distribution	The probability that a variable takes a value less than or equal to a certain value
D	D6	Intersoft Electronics internal data Radar data format, plot or track based.
	Data bits	In data communications, the number of bits used to send each character, not including any added timing or error checking bits
	DCE	Data Communications Equipment. The local and/or remote modem. A DCE is usually connected to a DTE.
	EHS	Enhanced Surveillance
	ELS	Elementary Surveillance
	DTE	Data Terminal Equipment. The computer or terminal, either local (yours), or the remote (the one you're communicating with). A DTE is usually connected to a DCE.
	DTED	Digital Terrain Elevation Data
E	EDR	Intersoft Electronics internal data format for record based data. Also stands for Extended Data Recorder, a device for generating and capturing serial data.
	EDR V2	Second version of the EDR format.
	Ethernet	A network specification developed by DEC, Intel, and Xerox which provides anywhere from 10 megabits to 1000 megabits per second transmission speeds.
F	Flow control	A method of controlling when information is sent
H	Hex	Hexadecimal. 16 based numbering system ranging from 0 to F
I	I/O	Input/Output. The transfer of data to or from a computer system involving communications channels, operator interface devices, and/or data acquisition and control interfaces.
M	MB	Megabytes of memory.
	Mode S	Selective addressing secondary surveillance radar technique
O	Oct	Octal value. 8 based numbering system ranging 0 to 7
P	Path	A path can be described as a file's address on your file system, describing where the file lives: An absolute path gives the complete path, starting at the root directory, or the very top of the filesystem; A relative path looks for a file from the directory you are currently in down.
R	Record	A collection of data forming a complete message.
	RS323, RS422	The Electronics Industry Association (EIA) has produced standards for RS232 and RS422 that deal with data communications.

S

SAC	System Area Code, used in Asterix data.
SALADT	Used by SASS-C Tool for visibility computation
SASS-C	Surveillance Analysis Support System for ATC-Centre
SIC	System Identification Code, used in Asterix data.
SMGET	Mode-S System Map Generator and Extractor Tool

T

Timeout	A timeout occurs when a device has waited too long for another device to send or receive a transmission.
---------	--

U

UAP	User Application Profile, used in Asterix data for assigning Data Items to Data Fields.
UDP	User Datagram Protocol. A connectionless, unreliable Internet protocol.
UTC	Coordinated Universal Time.

W

WGS-84	World Geodetic System 1984
--------	----------------------------

REFERENCED DOCUMENTS

Reference	Document
[1]	Coverage Map Interface Control Document for POEMS stations
[2]	SASS-C user manual

INDEX

<p>--A--</p> <p>Add threads 12</p> <p>Alarm 15, 23</p> <p style="padding-left: 20px;">Limit 16, 23</p> <p style="padding-left: 20px;">Traget 16, 23</p> <p>--B--</p> <p>background server 11</p> <p>BDS Register 24</p> <p>Benefits 8</p> <p>Blank Zones 13</p> <p>--C--</p> <p>Color 22</p> <p>Configuration 12</p> <p style="padding-left: 20px;">Alarm 15</p> <p style="padding-left: 20px;">Blank Zones 13</p> <p style="padding-left: 20px;">Data Source 13</p> <p style="padding-left: 20px;">Distribution 16</p> <p style="padding-left: 20px;">DTED 13</p> <p style="padding-left: 20px;">Exclude List 15</p> <p style="padding-left: 20px;">Parameters 14</p> <p style="padding-left: 20px;">SALADT 13</p> <p style="padding-left: 20px;">Site 12</p> <p style="padding-left: 20px;">SMGET 13</p> <p>CSV Format 8, 16, 21, 23, 24, 25</p> <p>--D--</p> <p>Data Source 13</p> <p>Distribution 16</p> <p>DTED 13</p> <p>--E--</p> <p>Edit threads 12</p> <p>ELS/EHS 26</p>	<p>Exclude List 15</p> <p>--G--</p> <p>General Overview 9</p> <p style="padding-left: 20px;">TRACKAN as part of the</p> <p style="padding-left: 40px;">RASS-R 9</p> <p style="padding-left: 40px;">TRACKAN Configuration .. 9</p> <p style="padding-left: 40px;">TRACKAN Processing Unit 9</p> <p style="padding-left: 40px;">TRACKAN Viewers 9</p> <p>Glossary 28</p> <p>--H--</p> <p>Help 18</p> <p>Histogram 23</p> <p>History 23</p> <p>Home 22</p> <p>--I--</p> <p><i>Installation</i> 6, 11</p> <p style="padding-left: 20px;">Running the background</p> <p style="padding-left: 40px;">server 11</p> <p style="padding-left: 20px;">Running TRACKAN</p> <p style="padding-left: 40px;">Processing Unit 11</p> <p>Introduction 8</p> <p style="padding-left: 20px;">Benefits and possibilities of</p> <p style="padding-left: 40px;">the system 8</p> <p>--L--</p> <p>Label 22</p> <p>Legend 21</p> <p>Load Configurations 16</p> <p>Lock 22</p> <p>--O--</p> <p>operation 9</p> <p>Overview <i>See</i> General Overview</p>	<p>--P--</p> <p>Parameters 14</p> <p>possibilities 8</p> <p>PPI 20</p> <p>--Q--</p> <p>Quit 18</p> <p>--R--</p> <p>Recalculation 17</p> <p>Running 17</p> <p>--S--</p> <p>SALADT 13</p> <p>Save Configurations 16</p> <p>Service 11</p> <p>Single 22</p> <p>Site 12</p> <p>SMGET 13</p> <p>Software components 19</p> <p style="padding-left: 20px;">BDS Register Window 24</p> <p style="padding-left: 20px;">Configuration Window 19</p> <p style="padding-left: 20px;">Histogram Window 23</p> <p style="padding-left: 20px;">History Window 23</p> <p style="padding-left: 20px;">Main GUI 19</p> <p style="padding-left: 20px;">PPI Window 20</p> <p style="padding-left: 20px;">Recalculation Window 19</p> <p style="padding-left: 20px;">Viewers 20</p> <p>--T--</p> <p>TRACKAN Processing Unit . 11</p> <p>--Z--</p> <p>Zoom 22</p>
--	--	--