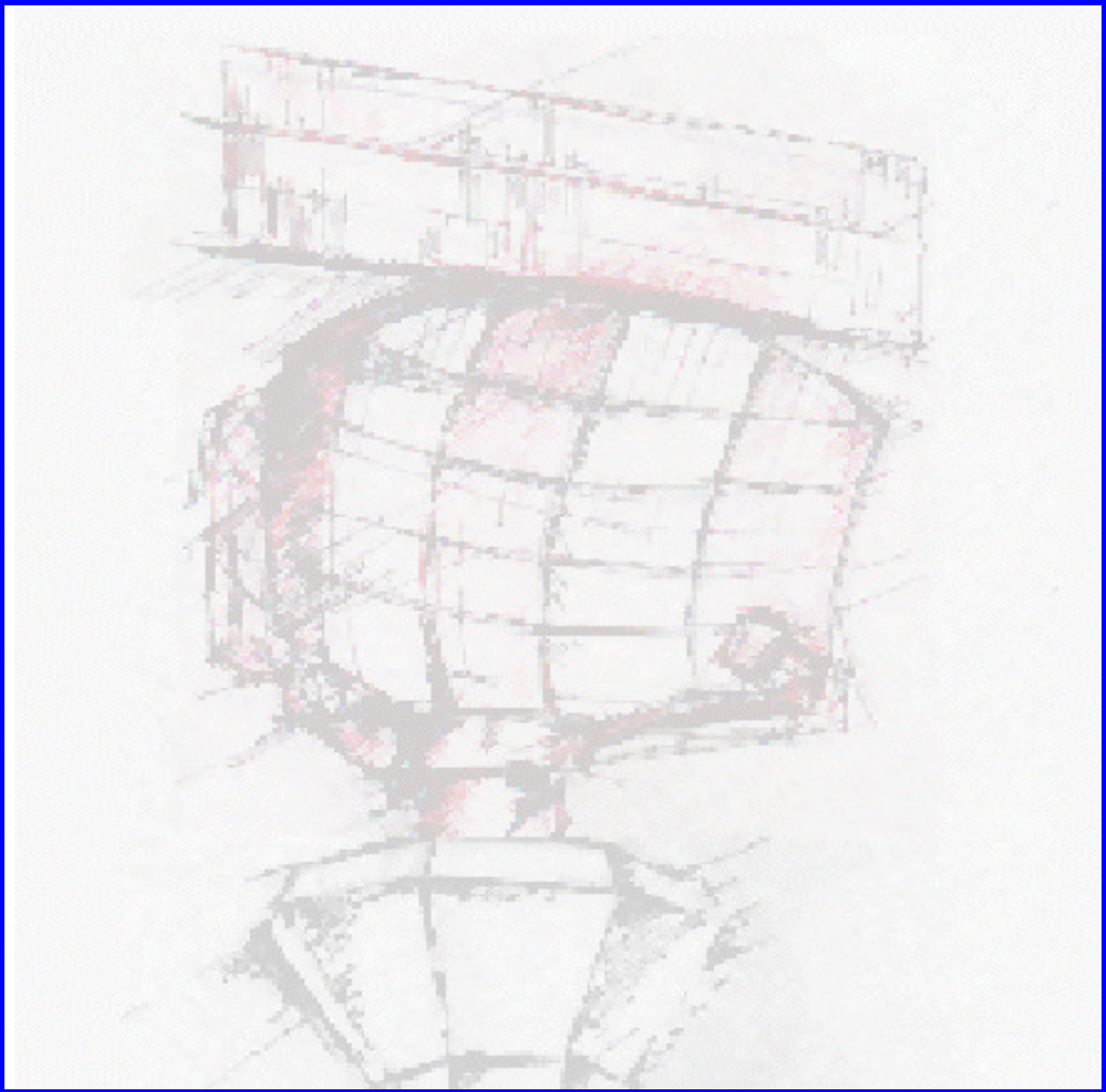


# RASS-R installation



## Installation guide

<b>Edition</b>	<b>:</b>	<b>12</b>
<b>Edition Date</b>	<b>:</b>	<b>05-DEC-17</b>
<b>Status</b>	<b>:</b>	<b>Released Issue</b>

# DOCUMENT IDENTIFICATION SHEET

## DOCUMENT DESCRIPTION

**Document Title**  
RASS-R installation manual

**Document Reference Number**

**EDITION :** 12

**EDITION DATE :** 05-DEC-17

### Abstract

### Keywords

RASS-R Installation

**CONTACT PERSON :** Glenn Bosmans

**TEL :** +32 14 231811

## DOCUMENT STATUS AND TYPE

### STATUS

### CATEGORY

Working Draft	<input type="checkbox"/>	Executive Task	<input type="checkbox"/>
Draft	<input type="checkbox"/>	Specialist Task	<input checked="" type="checkbox"/>
Proposed Issue	<input type="checkbox"/>	Lower Layer Task	<input type="checkbox"/>
Released Issue	<input checked="" type="checkbox"/>		

## ELECTRONIC BACKUP

**INTERNAL REFERENCE NAME :**

IE-UM-00017-011 RASS-R INSTALLATION  
MANUAL.doc

**DOCUMENT APPROVAL**

The following table identifies all authorities who have successively approved the present issue of this document.

<b>AUTHORITY</b>	<b>NAME AND SIGNATURE</b>	<b>DATE</b>
Author	BERT SAUVILLER	07/08/07
Editor	Joachim Freiwald Bert Sauviller Glenn Bosmans Glenn Bosmans	30/04/08 31-MAY-13 22-DEC-16 05-DEC-17
Director ATC	Ing. M. Vanuytven	
Director Software Department	Ir. E. Moons	

## DOCUMENT CHANGE RECORD

The following table records the complete history of the successive editions of the present document.

<b>EDITION</b>	<b>DATE</b>	<b>REASON FOR CHANGE</b>	<b>SECTIONS PAGES AFFECTED</b>
1.0	07/08/07	New document for RASS-R 3.2.0	All
1.1	19/09/07	Installation of patches	3,4
1.2	20/11/07	Minor changes	All
1.3	30/04/08	Updated to new installation procedures according to RASS-R 3.3.0	All
1.4	01/09/08	Updated to RASS-R 3.4.0 New in this version is the installation of the Intersoft Electronics Proxy	All
7	28/10/09	New filename; Updated to RASS-R 3.5.0; Important note added for MRD3	Section 3.5.
8	05/11/10	Updated to RASS-R 3.6.0; Important note added for installation, chapter 1; Information added about prerequisites and post installs, chapter 1; Important note added in 16 Modify, repair or remove an installation	8, 9, 25
9	31/05/13	Updated to RASS-R 3.7.0; Figure 3-26 added; Section 3.14 added; Figure 4-1 updated to Windows 7; Comment updated about license request files in paragraph 5.2	23,25,28,9
10	05/07/13	Compatible with RASS-R 3.7.1 Heading 6	30
11	22/12/16	Add section for 64bit installation of release 3.7.1	24
12	05/12/17	Updated for RASS-R release 3.8.1. Sections are removed, renamed and updated	All

---

## TABLE OF CONTENTS

<b>1.</b>	<b>PREREQUISITES OF THE OPERATING SYSTEM.....</b>	<b>8</b>
<b>2.</b>	<b>GENERAL INSTALLER.....</b>	<b>9</b>
2.1	CHOOSE PREREQUISITES AND PRODUCTS.....	9
2.2	PREREQUISITES INSTALLATION (EXAMPLE DIRECTX).....	13
2.3	APPLICATION INSTALLATION.....	14
2.4	LICENSE INSTALLATION.....	15
2.5	INSTALLATION COMPLETION.....	16
2.6	MODIFY, REPAIR OR REMOVE AN INSTALLATION.....	17
<b>3.</b>	<b>MANUALS.....</b>	<b>17</b>
<b>4.</b>	<b>REGISTRATION OF LICENSES.....</b>	<b>18</b>
4.1	GENERAL.....	18
4.2	REGISTRATION PROCEDURE.....	18

---

## TABLE OF FIGURES

*Figure 1-1: Regional settings* ..... 8  
*Figure 3-1: RASS-R Setup Wizard*..... 9  
*Figure 3-3: All applications selected*..... 11  
*Figure 3-4: Not all applications selected* ..... 11  
*Figure 3-5: Create app shortcuts* ..... 12  
*Figure 3-25: Installation Completion*..... 16

## CONVENTIONS USED IN THIS MANUAL

The following conventions are used in this manual:



***Note: This icon to the left of bold italicized text denotes a note, which alerts you to important information.***



***Caution: This icon to the left of bold italicized text denotes a caution, which alerts you to the possibility of data loss or a system crash.***



***Warning: This icon to the left of bold italicized text denotes a warning, which alerts you to the possibility of damage to you or your equipment***

## 1. Prerequisites of the operating system

Make sure that the firewall of the PC is turned off, since the RASS-R makes use of a lot of socket connections (TCP/UDP).

Make sure that the regional settings are as follows for correct time representation in different RASS-R modules:

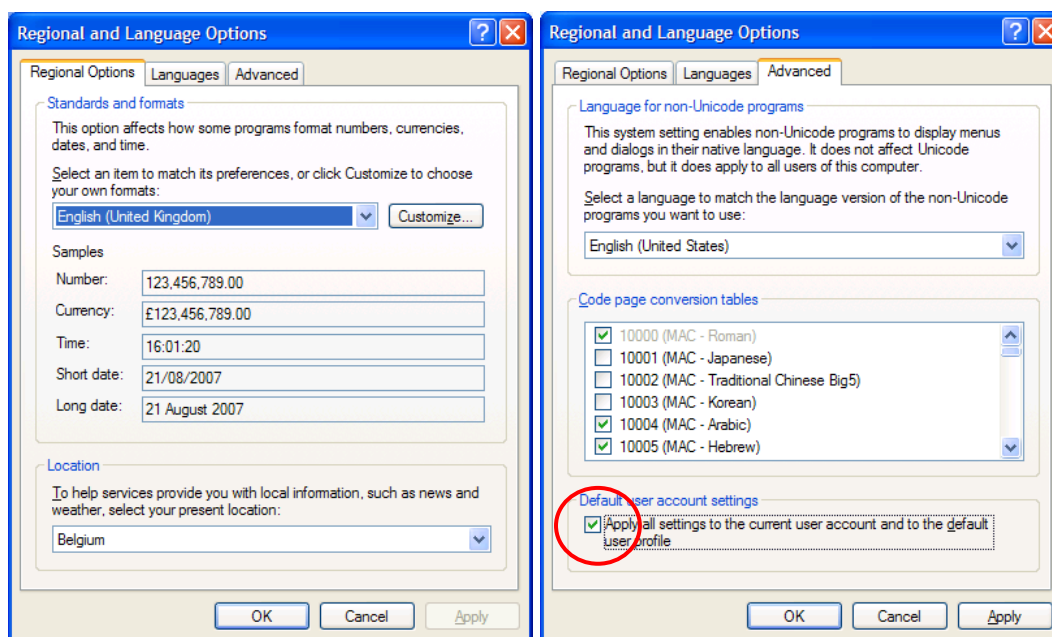


Figure 1-1: Regional settings



***Don't forget to apply the settings to the user accounts as in the right image.***



***Before you start the installation of a new RASS-R (see chapter 2), make sure you uninstall the previous RASS-R version. Otherwise, for every installation, you will end up with "Modify, repair or remove an installation".***



***Windows 7 users have to install the following mandatory Windows updates: windows6.1-KB976932, Windows6.1-kb3125574-v4, Windows6.1-KB3020369. All these updates have a 32 and 64bit version and can be found on the Windows website.***



## 2. General installer

### 1. Choose prerequisites and products

When the general installer is loaded, it will open the following dialog. When the installation is performed on a clean system, the installer will prompt the user for an installation location. By default the installer proposed the “C:\INTERSOFT” directory.

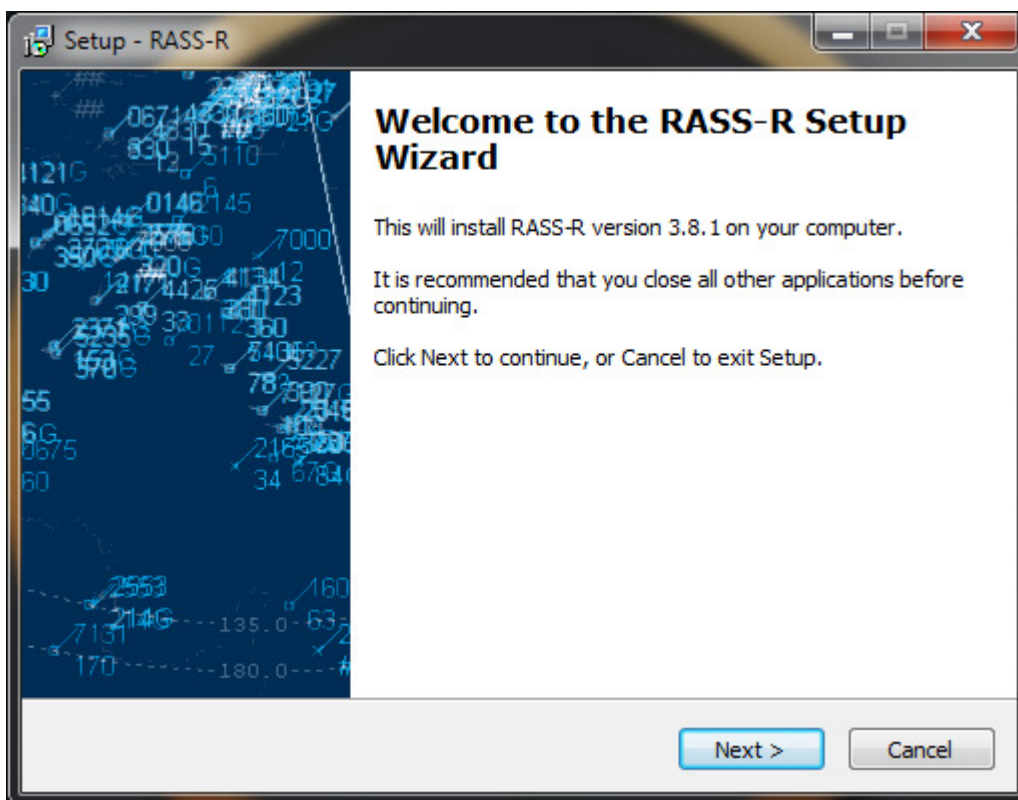


Figure 2-1: RASS-R Setup Wizard

First of all, the user needs to accept the end user agreements after the agreements an overview of all individual tools is presented that can be installed. The user can select the applications he wants to install:

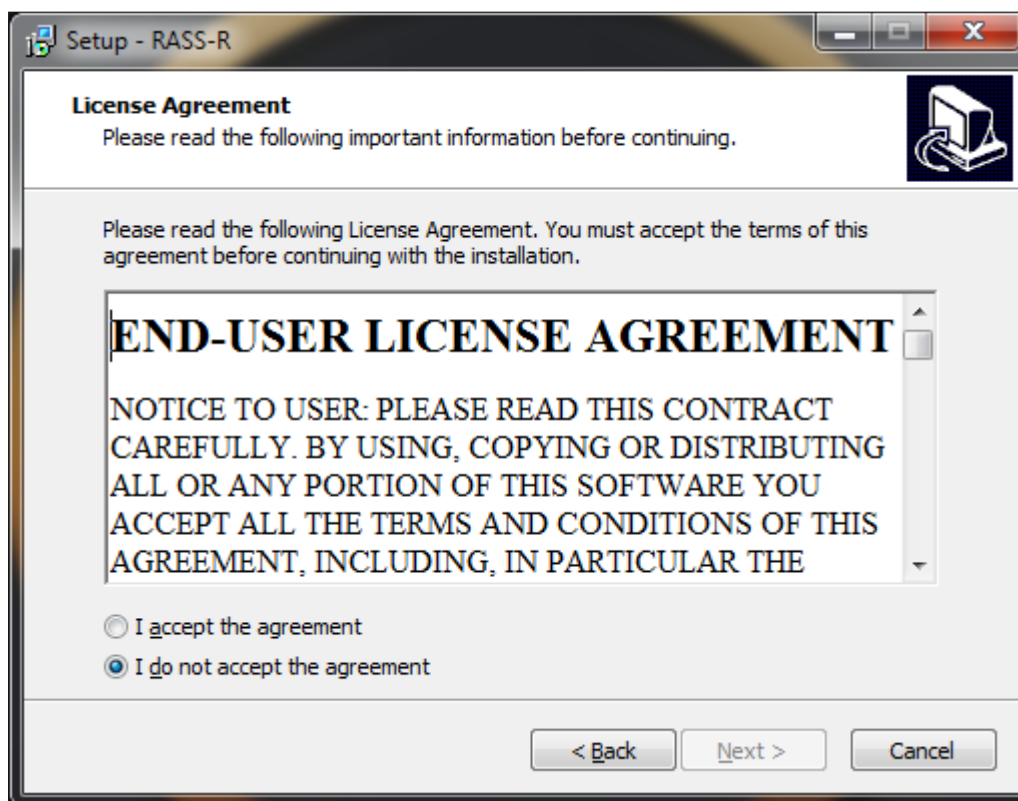


Figure 2-1: End-User License Agreement

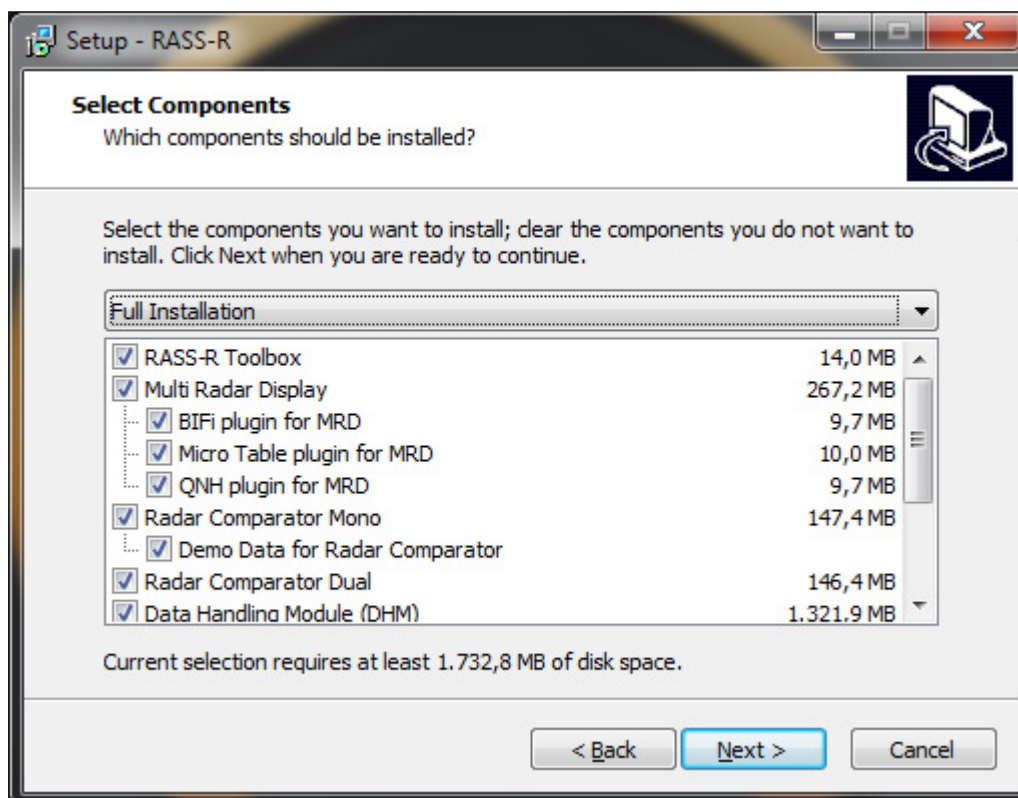


Figure 2-2: All applications selected

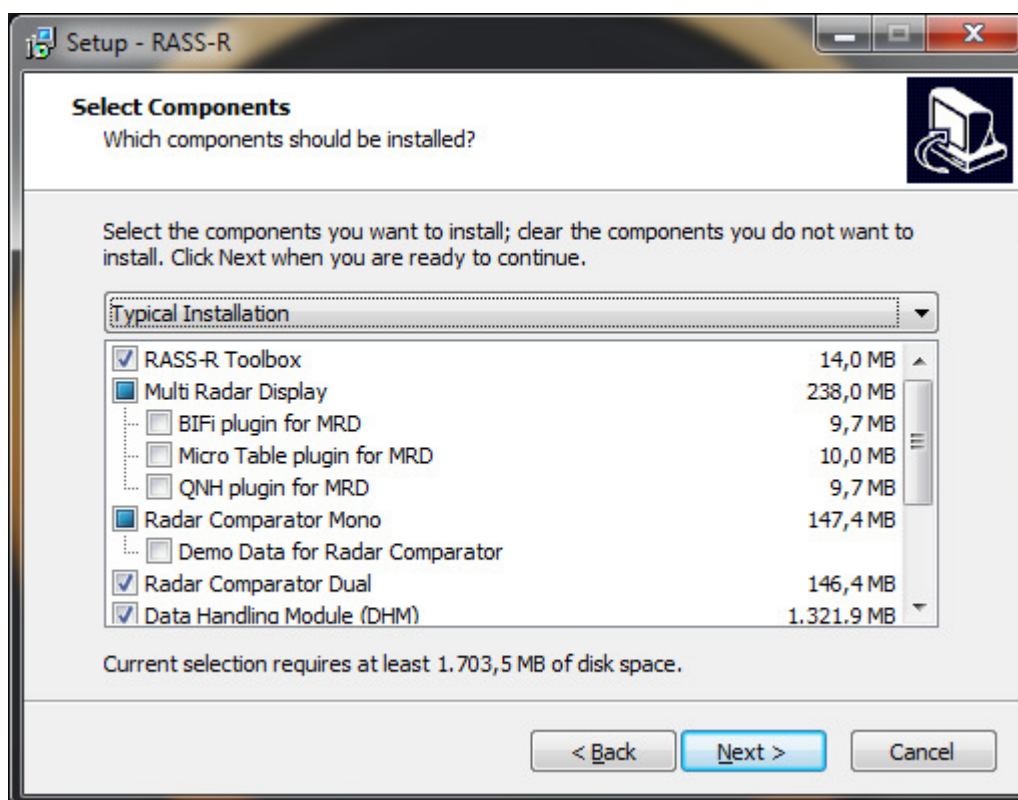


Figure 2-3: Not all applications selected

The user can choose to create application shortcuts and install the license files during the app installation.

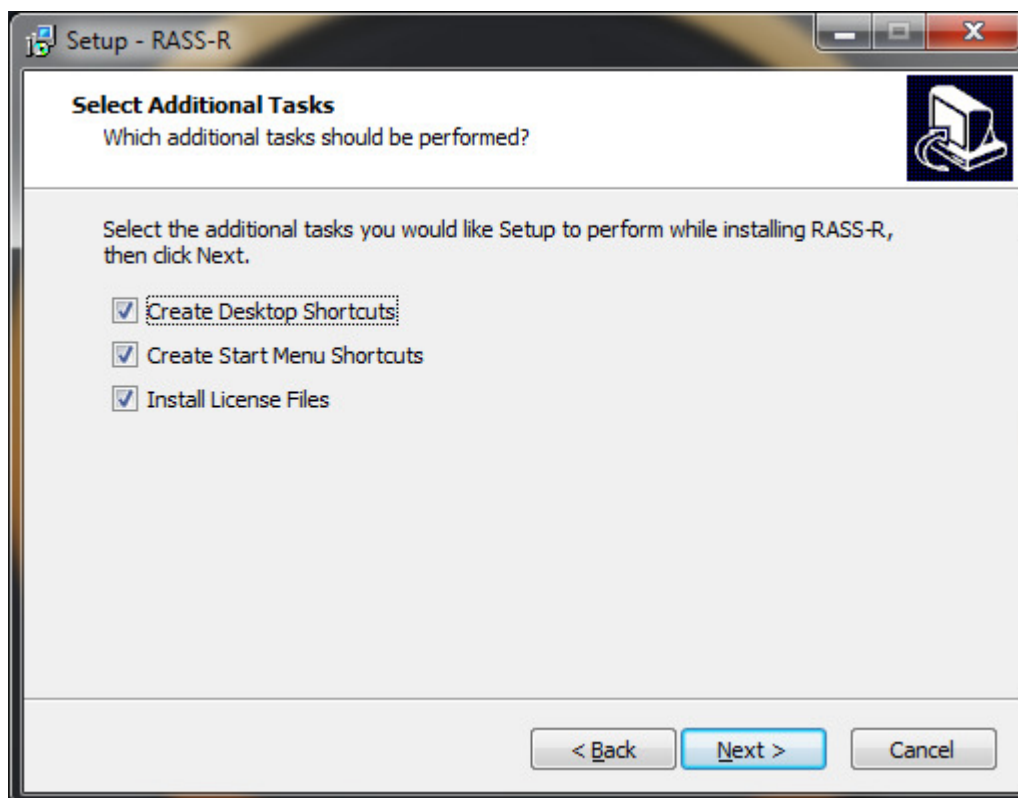


Figure 2-4: Create app shortcuts

Then press the “Install” button to start the installation.

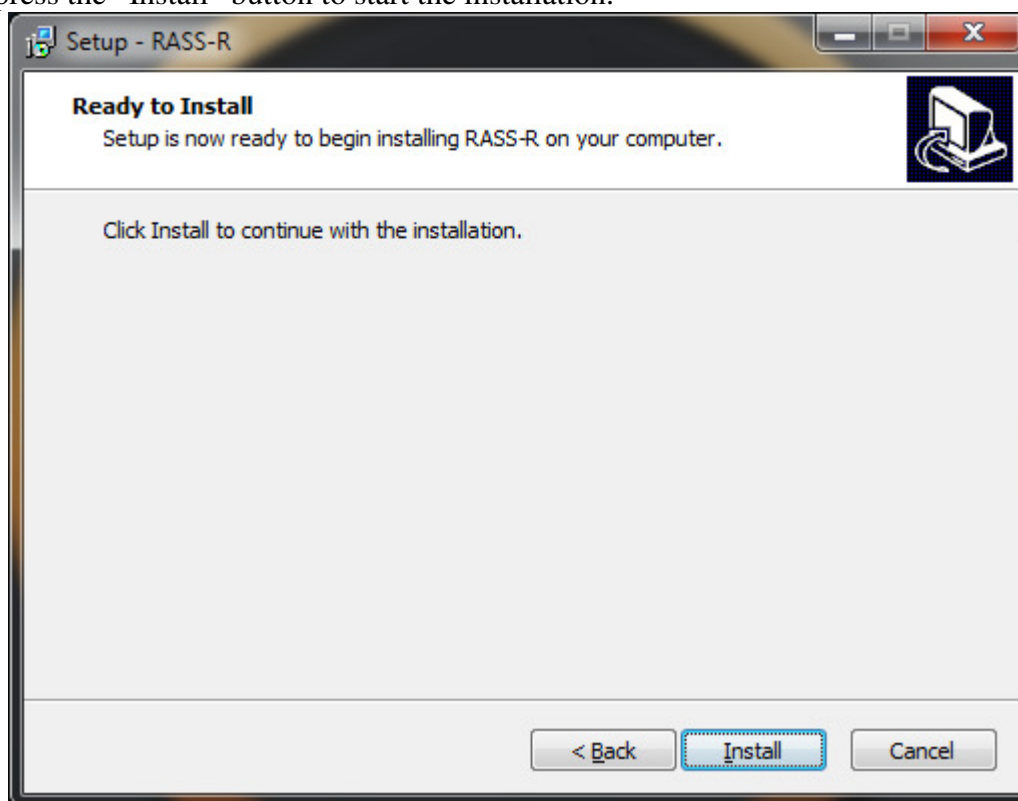


Figure 2-2: Selected components Install

## 2. Prerequisites installation (example DirectX)

As an example of a prerequisite installation, we describe the DirectX installation (which is necessary to run the MRD3.) All prerequisites are installed automatically.

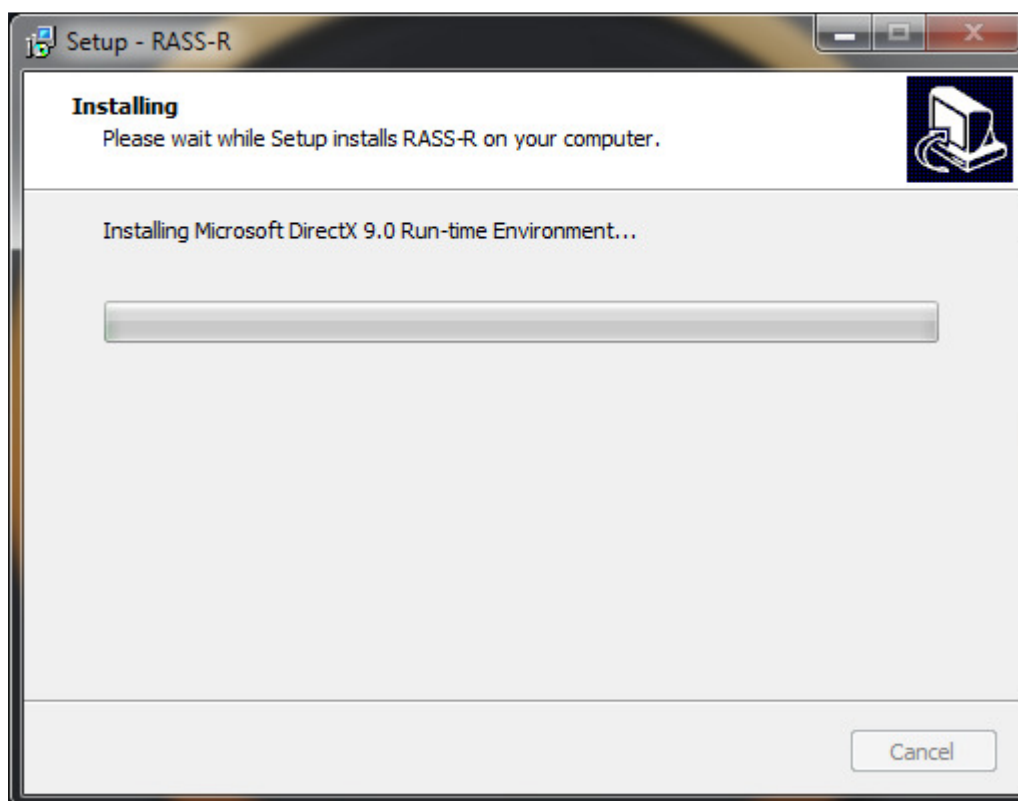


Figure 2-3: 2.2Prerequisites installation

**Remark:** there is currently a limitation in the DirectX: during a next install, it will suggest to install this prerequisite again because it cannot correctly detect that the DirectX was already installed on the computer or not.

### 3. Application installation

The selected applications will be installed on the specified disk location. For example: “D:\INTERSOFT”.

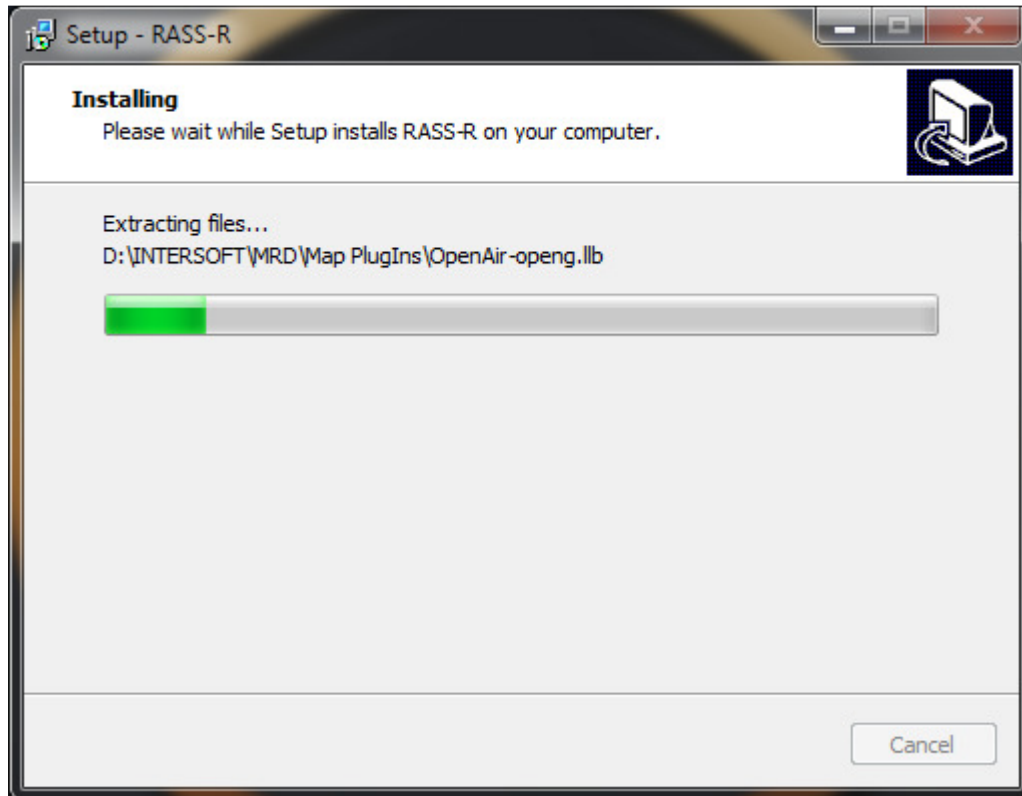


Figure 2-4: Application installation

## 4. License installation

The latest RASS-R release works with a license dongle and accompanied license file. During the installation the installer will request for the license file, which will be provided by Intersoft Electronics. Use the “Add License” button to import the provided license file.

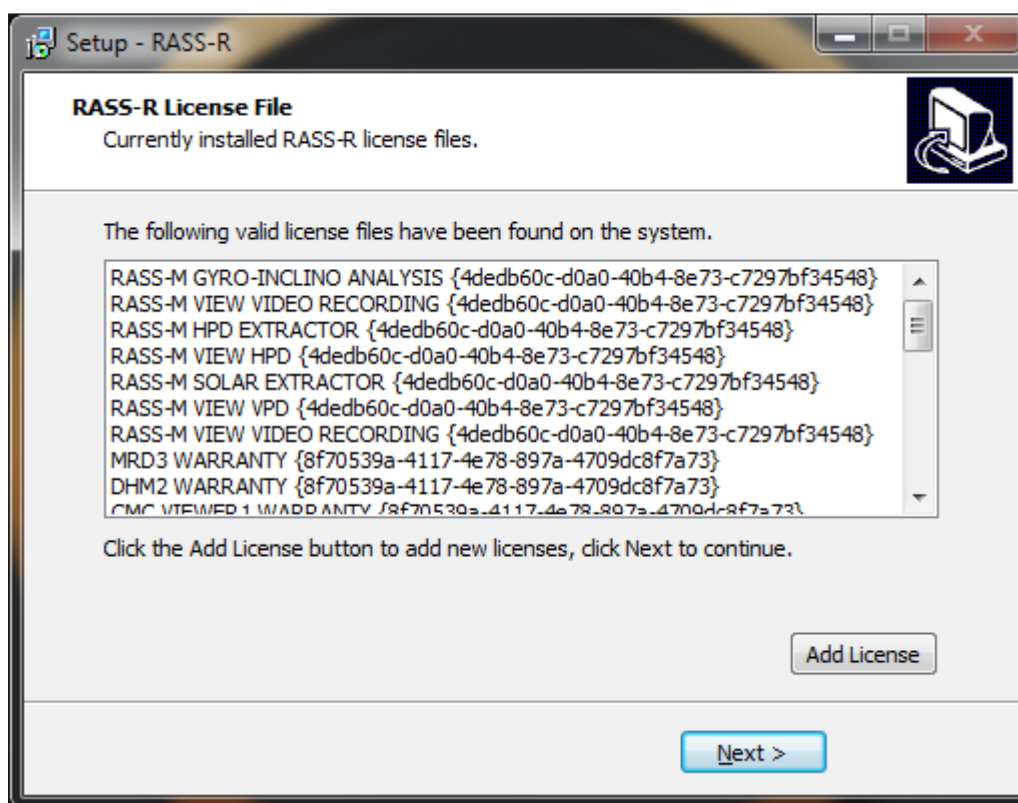


Figure 2-5: License installation

## 5. Installation Completion

At the end of the installation procedure the user will get the request to restart the PC.

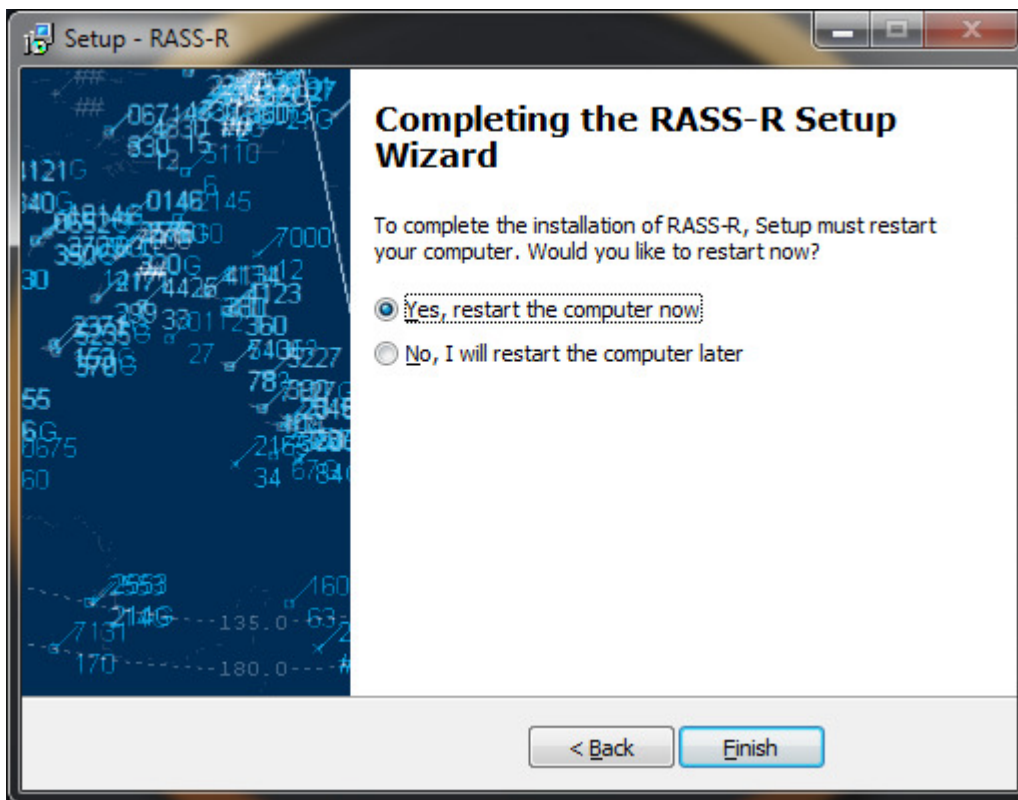


Figure 2-5: Installation Completion



## 6. Modify, repair or remove an installation

When the installation of one of the RASS-R items is already done, you can change the RASS-R features on your computer or even remove the RASS-R items. This can be initiated by loading the general installer again.

Removing the RASS-R applications can be performed using the start windows “remove programs” functionality.

## 3. Manuals

Upon completion, the user manuals are located in the installed application directory. The manuals are located next to the applications executable. The user can always keep them up to date by checking our ftp-server or website regularly!

## **4. Registration of licenses**

### **7. General**

Initially all the selected RASS-R modules are installed and can be used with full functionality. Because the RASS-R software is a modular product you need to register the purchased modules in order to operate the applications, without they will close again.

### **8. Registration procedure**

Prerequisites (delivered by Intersoft Electronics):

1. USB license dongle: This will be provided by Intersoft Electronics
2. License file: will, like the license dongle, be provided by Intersoft Electronics.

During the application installation, the installer will prompt the user for license files, use the “Add License” button to add license files (section 4). It is also possible to perform the license installation manually. To activate the license, please follow these instructions:

1. Make sure the version of the installed RASS-R software is 3.8.1 or higher.
2. The license files are packed in a .piz package. Copy this package to you desktop.
3. Right click and choose 'Rename'. Change the file type from .piz to .zip.
4. Unpack the zip file (2x .lic and 2x .lic.sig)
5. Copy these extracted files to the following location on your workstation :

*X:\INTERSOFT\DHMII\_Server\_Environment\licenses*  
(with 'X' the drive letter of the disk you installed your RASS-R software (standard D-drive))

6. Reboot the system and make sure the license dongle is plugged in to your workstation.